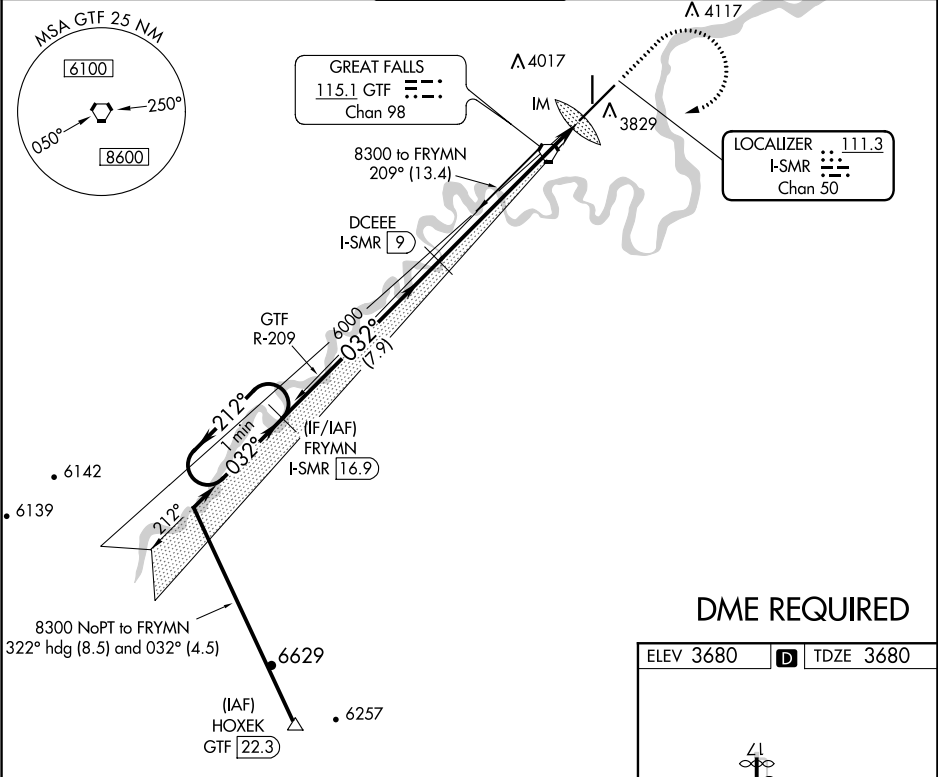


LOC/DME I-SMR <b>111.3</b> Chan 50	APP CRS <b>032°</b>	Rwy Idg <b>10502</b> TDZE <b>3680</b> Apt Elev <b>3680</b>	ILS RWY 3 (CAT II & III) GREAT FALLS INTL (GTF)	
--	------------------------	--	--	--

<div><div><div>⚠</div><div>⚠</div></div><div>CAT II: RVR 1000 authorized with specific OPSPEC, MSPEC, or LOA approval and use of autoland or HUD to touchdown. DME required.</div></div>	<div>ALSF-2</div> <div><div><div></div><div></div><div></div></div></div>	MISSED APPROACH: Climb to 5000 then climbing right turn to 8300 direct GTF VORTAC then on GTF VORTAC R-209 to FRYMN/I-SMR 16.9 DME and hold.
--	---	--

ATIS <b>126.6 269.0</b>	GREAT FALLS APP CON <b>128.6 379.175</b>	GREAT FALLS TOWER <b>118.7 282.2</b>	GND CON <b>121.7 348.6</b>	CLNC DEL <b>121.7 348.6</b>
----------------------------	---	---	-------------------------------	--------------------------------



DME REQUIRED

