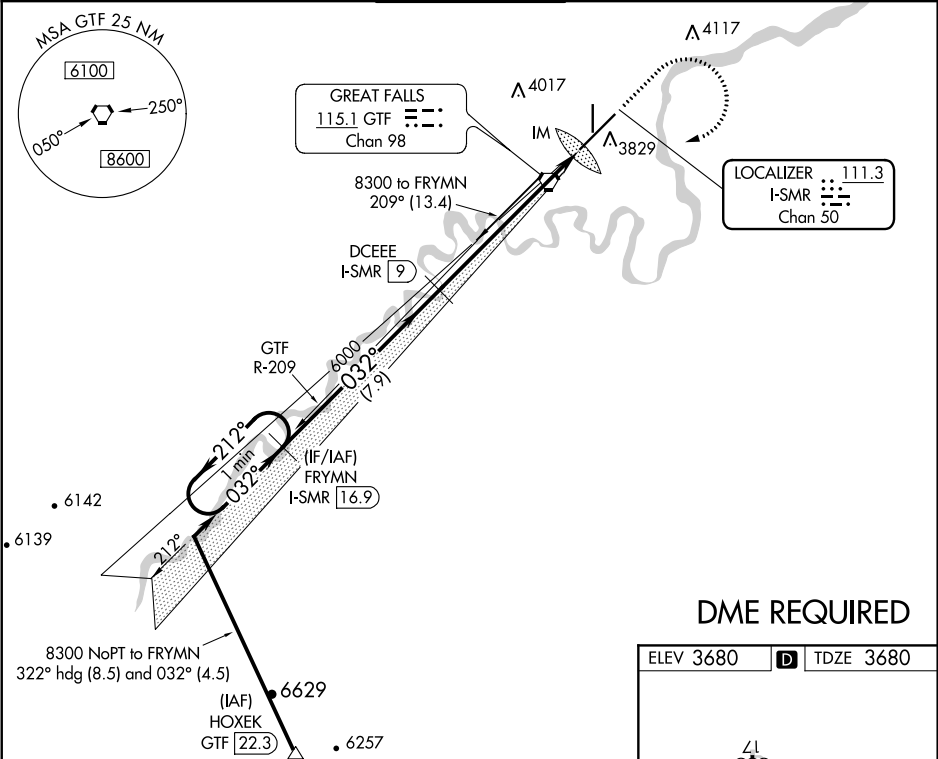


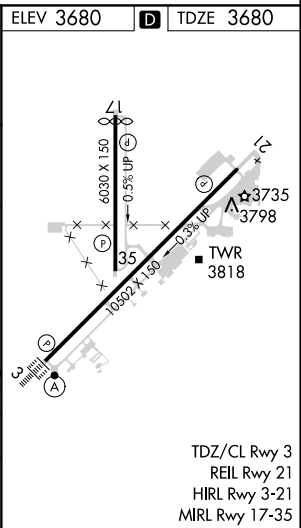
LOC/DME I-SMR <b>111.3</b> Chan 50	APP CRS <b>032°</b>	Rwy Idg TDZE <b>3680</b> Apt Elev <b>3680</b>	<b>ILS RWY 3 (SA CAT I)</b> GREAT FALLS INTL (GTF)
--	------------------------	---	---

 -33°C	Requires specific OPSPEC, MSPEC, or LOA approval and use of HUD to DH. DME required.	ALSF-2 	MISSED APPROACH: Climb to 5000 then climbing right turn to 8300 direct GTF VORTAC then on GTF VORTAC R-209 to FRYMNI/I-SMR 16.9 DME and hold.
-----------	--	------------	---

ATIS <b>126.6 269.0</b>	GREAT FALLS APP CON <b>128.6 379.175</b>	GREAT FALLS TOWER <b>118.7 282.2</b>	GND CON <b>121.7 348.6</b>	CLNC DEL <b>121.7 348.6</b>
----------------------------	---	---	-------------------------------	--------------------------------



DME REQUIRED



VGSi and ILS glidepath not coincident (VGSi Angle 3.00°/TCH 70).		5000 ↑	8300 ↗	GTF 	GTF R-209	FRYMN I-SMR 16.9
One Minute Holding Pattern		FRYMN I-SMR 16.9		Use I-SMR DME when on the localizer course.		
8300	←212° 032°→	032°	6000			