

ILS or LOC RWY 3
GREAT FALLS INTL (GTF)

MISSED APPROACH: Climb to 5000 then climbing right turn to 8300 direct GTF VORTAC then on GTF VORTAC R-209 to FRYMN/I-SMR 16.9 DME and hold.

MSA GTF 25 NM

6100

050°

250°

8600

GREAT FALLS
115.1 GTF
Chan 98

8300 to FRYMN
209° (13.4)

DCEEE
I-SMR 9

GTF
R-209

8000
032°
(7.9)

(IF/IAF)
FRYMN
I-SMR 16.9

212°

1 min

032°

212°

8300 NoPT to FRYMN
322° hdg (8.5) and 032° (4.5)

(IAF)
HOXEK
GTF 22.3

6629

6257

Δ 4017

IM

Δ 3829

Δ 4117

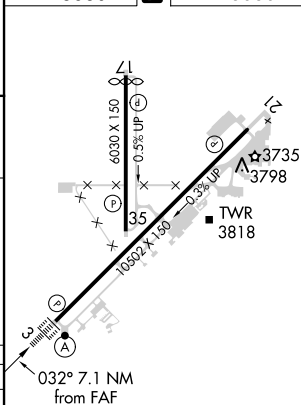
LOCALIZER
111.3
I-SMR
Chan 50

DME REQUIRED

ELEV 3680 D TDZE 3680

Δ 1

ELEV 3680	D	TDZE 3680
-----------	----------	-----------



TDZ/CL Rwy 3
REIL Rwy 21
HIRL Rwy 3-21
MIRL Rwy 17-35

VGS and ILS glidepath not coincident (VGS Angle 3.00/TCH 70).

One Minute Holding Pattern

FRYMN I-SMR 16.9

5000 8300 GTF GTF R-209 FRYMN I-SMR 16.9

DCEE I-SMR 9

Use I-SMR DME when on the localizer course.

8300 ← 212° 032° → 032° 6000

GS 3.00° TCH 54

*I-SMR 3.2

*I-SMR 1.9

IM

7.9 NM 5.9 NM 1.1 0.1

CATEGORY	A	B	C	D
S-ILS 3	3880/18		200 (200-½)	
S-LOC 3	4140/24	460 (500-½)	4140/45	460 (500-¾)
CIRCLING	4140-1	460 (500-1)	4320-1¾ 640 (700-1¾)	4420-2¼ 740 (800-2¼)

NW-1, 31 DEC 2020 to 28 JAN 2021

NW-1, 31 DEC 2020 to 28 JAN 2021