

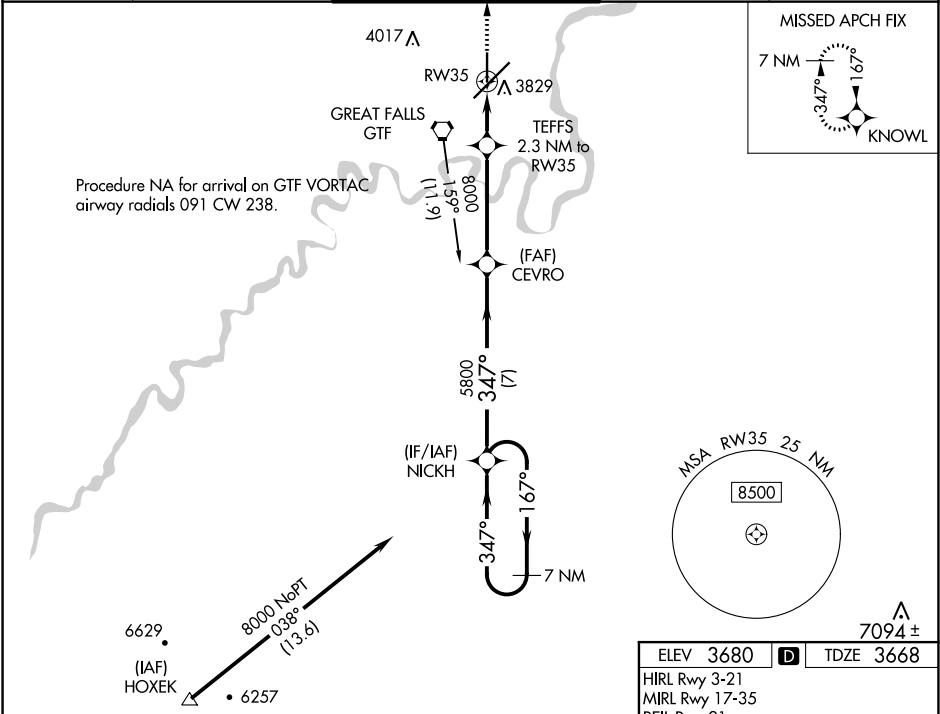
WAAS CH 82240 W35A	APP CRS 347°	Rwy Idg TDZE Apt Elev	5400 3668 3680
--	------------------------	-----------------------------	---

RNAV (GPS) RWY 35
GREAT FALLS INTL (GTF)

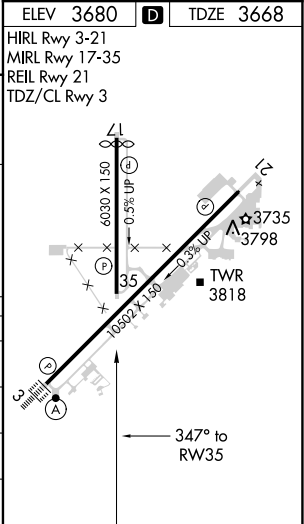
⚠ For uncompensated Baro-VNAV systems, LNAV/VNAV NA below -26°C (-14°F) or above 52°C (126°F).
❄ -33°C
Rwy 35 helicopter visibility reduction below ¾ SM NA.

MISSED APPROACH: Climb to 6200 direct KNOWL and hold.

ATIS 126.6 269.0	GREAT FALLS APP CON 128.6 379.175	GREAT FALLS TOWER 118.7 282.2	GND CON 121.7 348.6	CLNC DEL 121.7 348.6
----------------------------	---	---	-------------------------------	--------------------------------



7 NM Holding Pattern		NICKH	CEVRO	TEFFS	RW35
8000		347°	5800	2.3 NM to RW35	
GP 3.00° TCH 48				*1.1 NM to RW35	
7 NM		4.2 NM	1.2 NM	1.1 NM	
CATEGORY	A	B	C	D	
LPV DA		3918-¾	250 (300-¾)		
LNAV/VNAV DA		4086-1⅜	418 (500-1⅜)		
LNAV MDA	4080-¾ 412 (500-¾)	4080-1 412 (500-1)	4080-1⅛	412 (500-1⅛)	
CIRCLING	4120-1 440 (500-1)	4140-1 460 (500-1)	4320-1¾ 640 (700-1¾)	4420-2¼ 740 (800-2¼)	



NW-1, 31 DEC 2020 to 28 JAN 2021

NW-1, 31 DEC 2020 to 28 JAN 2021