

APP CRS	Rwy Idg	10502
212°	TDZE	3669
	Apt Elev	3680

RNAV (RNP) Z RWY 21  
GREAT FALLS INTL (GTF)

**T**  
**-33°C**

RF required. GPS required. For uncompensated Baro-VNAV systems, procedure NA below -24°C (-11°F) or above 49°C (121°F).

**MISSED APPROACH:** Climb to 8000 on track 212° to ZETNI, right turn to UPIGY and on track 271° to TUCKB and hold, continue climb-in-hold to 8000.

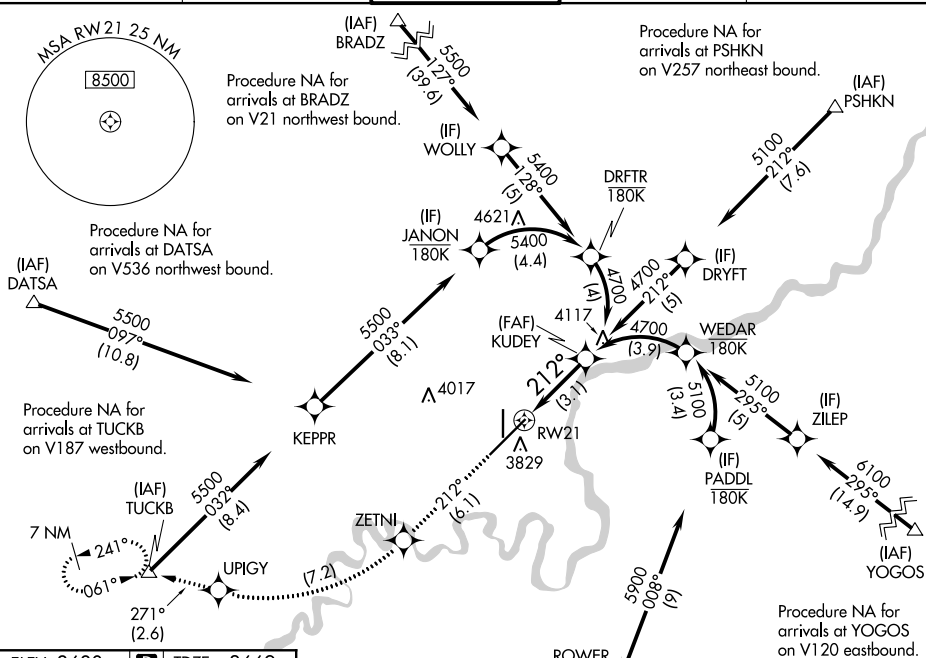
ATIS  
126.6 269.0

GREAT FALLS APP CON  
128.6 379.175

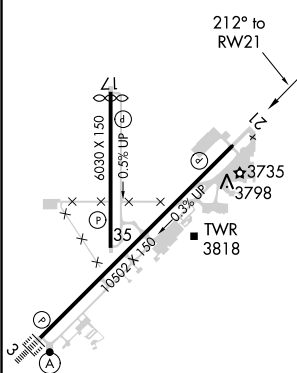
GREAT FALLS TOWER  
118.7 282.2

GND CON  
121.7 348.6

CLNC DEL  
**121.7 348.6**

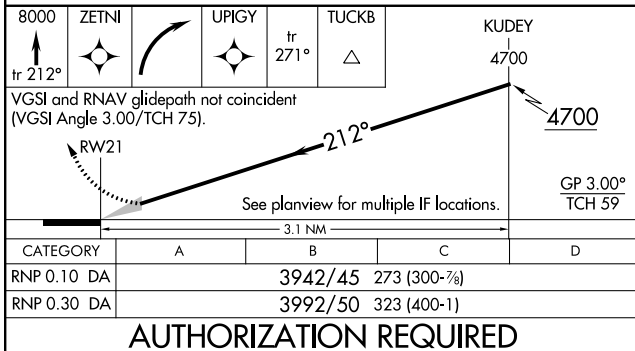


ELEV 3680	<b>D</b>	TDZE 3669
-----------	----------	-----------



TDZ/CL Rwy 3  
REIL Rwy 21  
HIRL Rwy 3-21  
MIRL Rwy 17-35

### Procedure NA for arrivals at URELE on V536 southbound



**AUTHORIZATION REQUIRED**