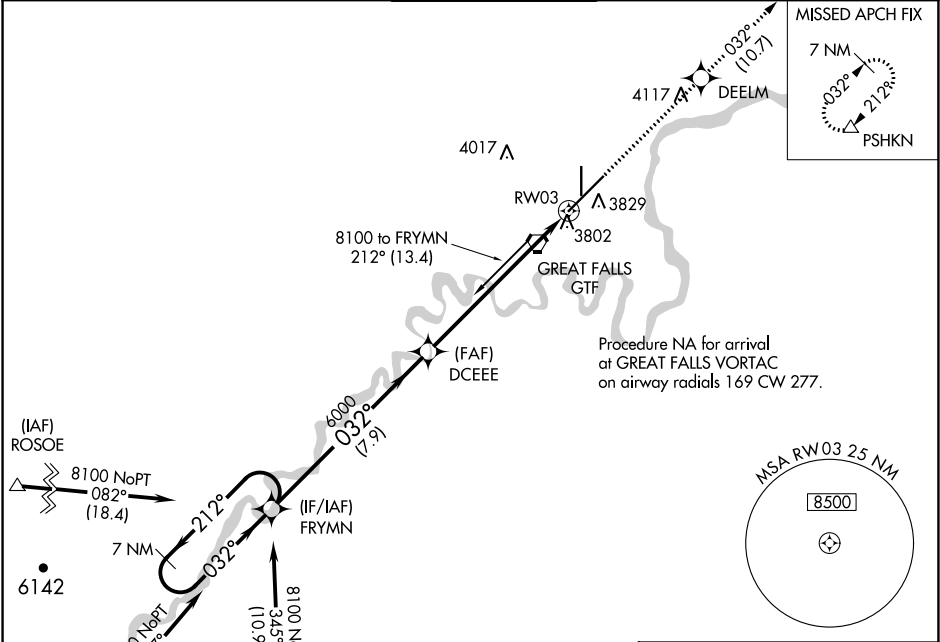


WAAS CH 70602 W03A	APP CRS 032°	Rwy Idg 10502 TDZE 3680 Apt Elev 3680
--	------------------------	--

RNAV (GPS) Y RWY 3
GREAT FALLS INTL (GTF)

 -33°C	For uncompensated Baro-VNAV systems, LNAV/VNAV NA below -25°C (-13°F) or above 50°C (123°F). DME/DME RNP-0.3 NA. For inop ALS, increase LNAV/VNAV all Cats visibility to RVR 4500.	ALSF-2 	MISSED APPROACH: Climb to 6200 direct DEELM and on track 032° to PSHKN and hold.
-----------	--	------------	--

ATIS 126.6 269.0	GREAT FALLS APP CON 128.6 379.175	GREAT FALLS TOWER 118.7 282.2	GND CON 121.7 348.6	CLNC DEL 121.7 348.6
----------------------------	---	---	-------------------------------	--------------------------------



ELEV 3680		D TDZE 3680	
<p>Diagram illustrating the missed approach procedure: Climb to 6200 direct DEELM and on track 032° to PSHKN and hold.</p>			
VGS and RNAV glidepath not coincident (VGS Angle 3.00/TCH 70).			
7 NM Holding Pattern FRYMN			
8100 GP 3.00° TCH 54			
DCEEE 6000			
DEELM 6200			
PSHKN			
*1.2 NM to RWY 03			
*LNAV only			
7.9 NM 5.9 NM 1.2 NM			
CATEGORY	A	B	C
LPV DA	3880/18 200 (200-½)		
LNAV/VNAV DA	3963/24 283 (300-½)		
LNAV MDA	4140/24 460 (500-½)	4140/45 460 (500-¾)	
CIRCLING	4140-1 460 (500-1)	4320-1¾ 640 (700-1¾)	4420-2¼ 740 (800-2¼)