

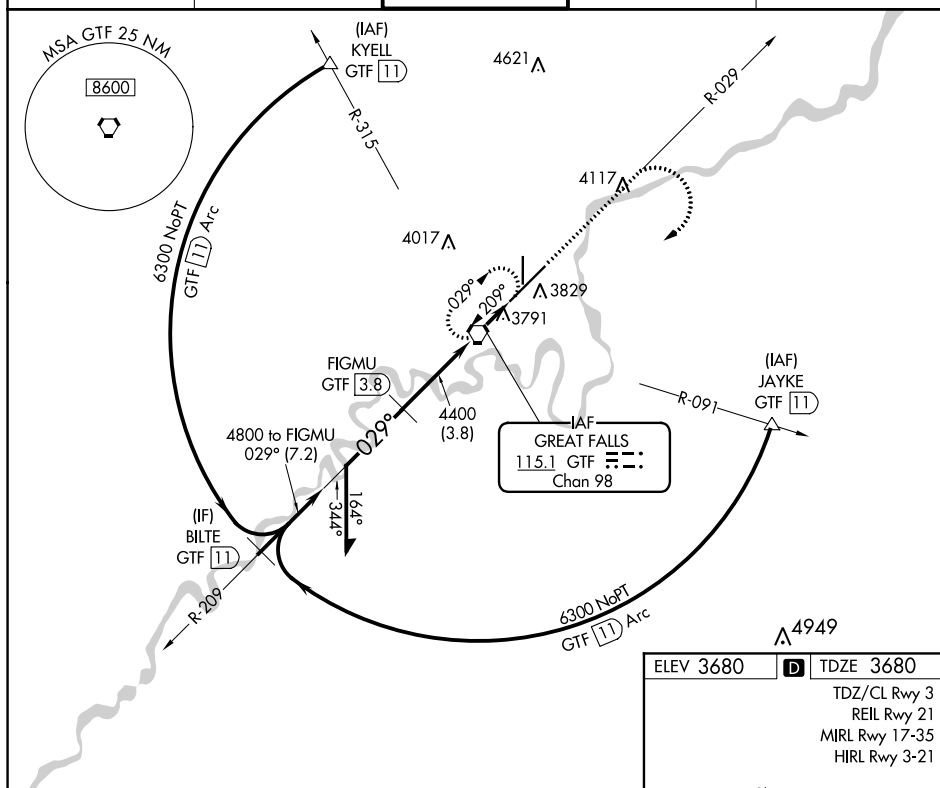


| | | |
|---|------------------------|--|
| VORTAC GTF <u>115.1</u> Chan 98 | APP CRS 029° | Rwy Idg 10502 TDZE 3680 Apt Elev 3680 |
|---|------------------------|--|

VOR/DME RWY 3
GREAT FALLS INTL (GTF)

| | | |
|--|---|--|
|  For inoperative ALSF-2, increase S-3 Cat D visibility to RVR 6000. |  | MISSED APPROACH: Climb to 5000 via GTF VORTAC R-029 then climbing right turn to 6300 direct GTF VORTAC and hold, continue climb-in-hold to 6300. |
|--|---|--|

| | | | | |
|-------------|---------------------|-------------------|-------------|-------------|
| ATIS | GREAT FALLS APP CON | GREAT FALLS TOWER | GND CON | CLNC DEL |
| 126.6 269.0 | 128.6 379.175 | 118.7 282.2 | 121.7 348.6 | 121.7 348.6 |



| | | | | |
|---|---------------------|---|-------------------------|-------------------------|
| <p>VGSI and descent angles not coincident (VGSI Angle 3.00/TCH 70).</p> | | <p>5000</p> <p>6300</p> <p>GTF</p> <p>GTF R-029</p> | | |
| CATEGORY | A | B | C | D |
| S-3 | 4060/24 380 (400-½) | | | NA |
| CIRCLING | 4180-1 | 500 (500-1) | 4320-1¾ 640 (700-1¾) | 4420-2¼ 740 (800-2¼) |

