

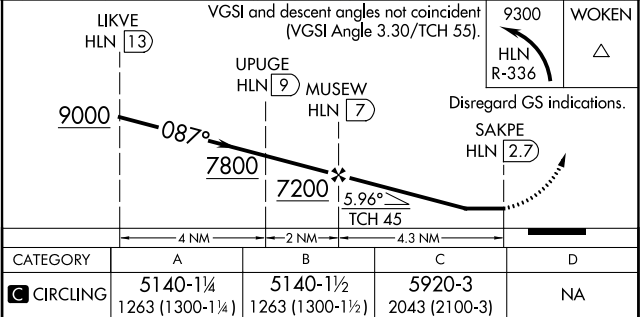
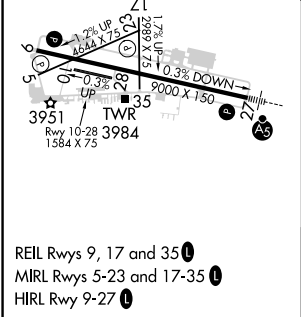
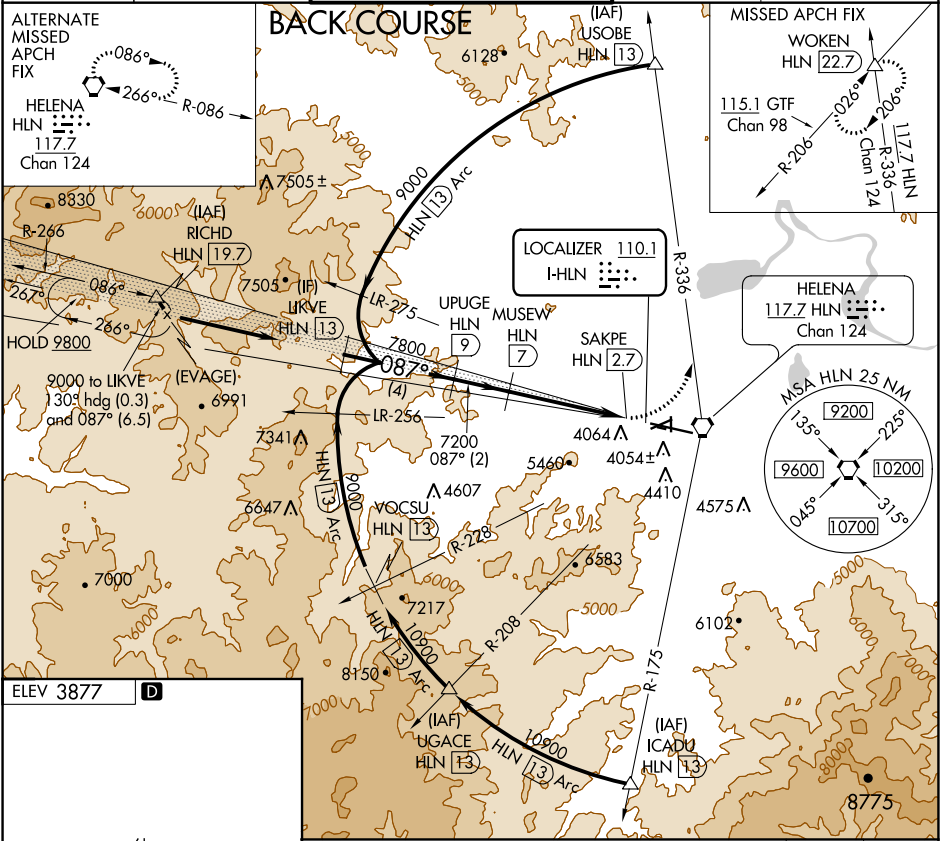
LOC	I-HLN	APP CRS	Rwy Idg	N/A
110.1		087°	TDZE	N/A
			Apt Elev	3877

LOC/DME BC-C
HELENA RGNL (HLN)

⚠ Circling to Rwy 5, 35 NA at night. When local altimeter setting not received, procedure NA. Visibility reduction by helicopters NA. DME from HLN VORTAC simultaneous reception of I-HLN and HLN DME required. When VGSI inop, Circling to Rwy 9, 23 NA at night.

MISSED APPROACH: Climbing left turn to 9300 on HLN VORTAC R-336 to WOKEN INT and hold.

ATIS 120.4	HELENA APP CON ★ 119.5 229.4	HELENA TOWER ★ 118.3 (CTAF) 0 257.8	GND CON 121.9	UNICOM 122.95
---------------	---------------------------------	--	------------------	------------------



HELENA, MONTANA Amdt 5A 16JUL20	46°36'N-111°59'W	HELENA RGNL (HLN) LOC/DME BC-C
------------------------------------	------------------	-----------------------------------

NW-1, 31 DEC 2020 to 28 JAN 2021

NW-1, 31 DEC 2020 to 28 JAN 2021