

APP CRS	Rwy Idg	9000
267°	TDZE	3852
	Apt Elev	3877

RNAV (RNP) Z RWY 27

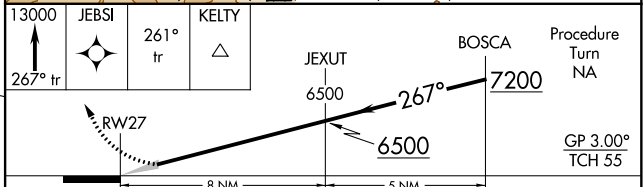
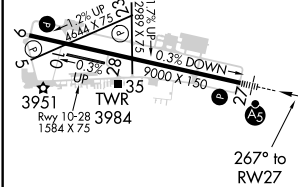
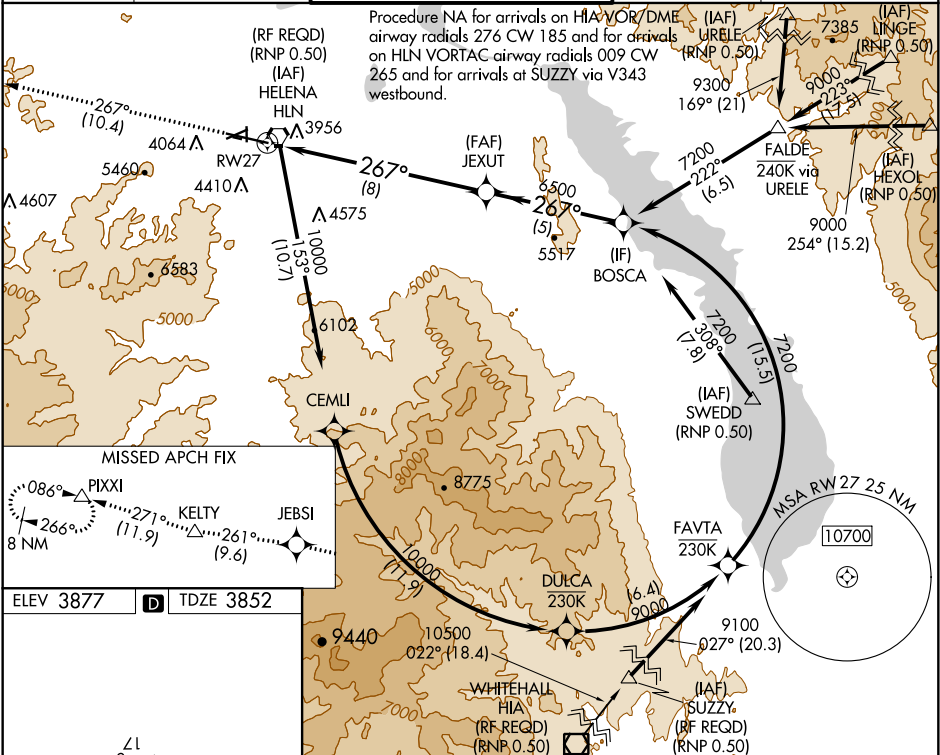
HELENA RGNL (HLN)

GPS required. For uncompensated Baro-VNAV systems, procedure NA below -22°C (-7°F) or above 41°C (105°F). *Missed approach requires minimum climb of 295 feet per NM to 7900. #Missed approach requires minimum climb of 290 feet per NM to 7300. †Missed approach requires minimum climb of 405 feet per NM to 6300. For inoperative MALSR, increase RNP 0.18* visibility to 1, RNP 0.22# visibility to 1¼, and RNP 0.30† visibility to 1½. Inoperative table does not apply to RNP 0.30.

MALSR

MISSED APPROACH: Climb to 13000 via 267° track to JEBSI, and via 261° track to KELTY, and via 271° track to PIXXI and hold, continue climb-in-hold to 13000.

ATIS	HELENA APP CON *	HELENA TOWER *	GND CON	UNICOM
120.4	119.5 229.4	118.3 (CTAF) 257.8	121.9	122.95



CATEGORY	A	B	C	D
RNP 0.18 DA*		4119-½	267 (300-½)	
RNP 0.22 DA#		4212-¾	360 (400-¾)	
RNP 0.30 DA†		4287-1	435 (500-1)	
RNP 0.30 DA		4863-4	1011 (1000-4)	

AUTHORIZATION REQUIRED

NW-1, 31 DEC 2020 to 28 JAN 2021

NW-1, 31 DEC 2020 to 28 JAN 2021