

|  |                        |  |
|--|------------------------|--|
| WAAS<br>CH <b>69405</b><br><b>W27A</b> | APP CRS<br><b>267°</b> | Rwy Idg<br>TDZE<br>Apt Elev<br><b>9000</b><br><b>3852</b><br><b>3877</b> |
|--|------------------------|--|

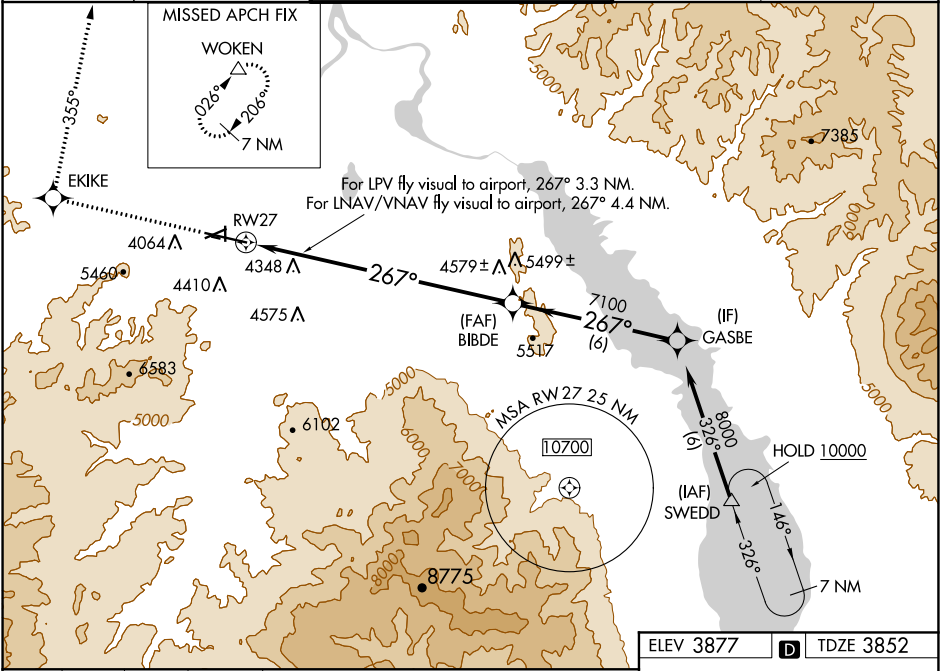
RNAV (GPS) X RWY 27  
HELENA RGNL (HLN)

**⚠** Circling NA for Cat D south of Rwy 9-27. For uncompensated Baro-VNAV systems, LNAV/VNAV NA below -22°C (-7°F) or above 42°C (107°F). DME/DME RNP- 0.3 NA. Inoperative table does not apply to LNAV Cats A-B. Circling to Rwy 5, 23, 35 NA at night.

**MALSR**

**⚠** MISSED APPROACH: Climb to 9300 direct EKIKE and on track 355° to WOKEN and hold, continue climb-in-hold to 9300.

|                      |  |   |                         |                         |
|----------------------|--|---|-------------------------|-------------------------|
| ATIS<br><b>120.4</b> | HELENA APP CON ★<br><b>119.5 229.4</b> | HELENA TOWER ★<br><b>118.3 (CTAF) 257.8</b> | GND CON<br><b>121.9</b> | UNICOM<br><b>122.95</b> |
|----------------------|--|---|-------------------------|-------------------------|



|      |       |       |
|------|-------|-------|
| 9300 | EKIKE | WOKEN |
| ↑    | ✱     | △     |
| tr   | 355°  |       |

LPV, fly visual, 267° 3.3 NM.  
LNAV/VNAV, fly visual 267° 4.4 NM.

RW27

\*4.8 NM to RW27

\*LNAV only

BIBDE 7100

GASBE 8000

267°

7100

GP 3.00° TCH 55

| CATEGORY     | A                         | B                         | C                      | D |
|--------------|---------------------------|---------------------------|------------------------|---|
| LPV DA       | 4965-2 1113 (1100-2)      |                           | 4965-3 1113 (1100-3)   |   |
| LNAV/VNAV DA | 5289-2 1437 (1500-2)      |                           | 5289-3 1437 (1500-3)   |   |
| LNAV MDA     | 5440-1½<br>1588 (1600-1½) | 5440-1½<br>1588 (1600-1½) | 5440-2½ 1588 (1600-2½) |   |
| CIRCLING     | 5440-1½<br>1563 (1600-1½) | 5440-1½<br>1563 (1600-1½) | 5920-3 2043 (2100-3)   |   |

ELEV 3877 **D** TDZE 3852

Procedure Turn NA

GASBE 8000

GP 3.00° TCH 55

267° to RW27

REIL Rwy 5, 17 and 35  
MIRL Rwy 5-23 and 17-35  
HIRL Rwy 9-27

NW-1, 31 DEC 2020 to 28 JAN 2021

NW-1, 31 DEC 2020 to 28 JAN 2021