

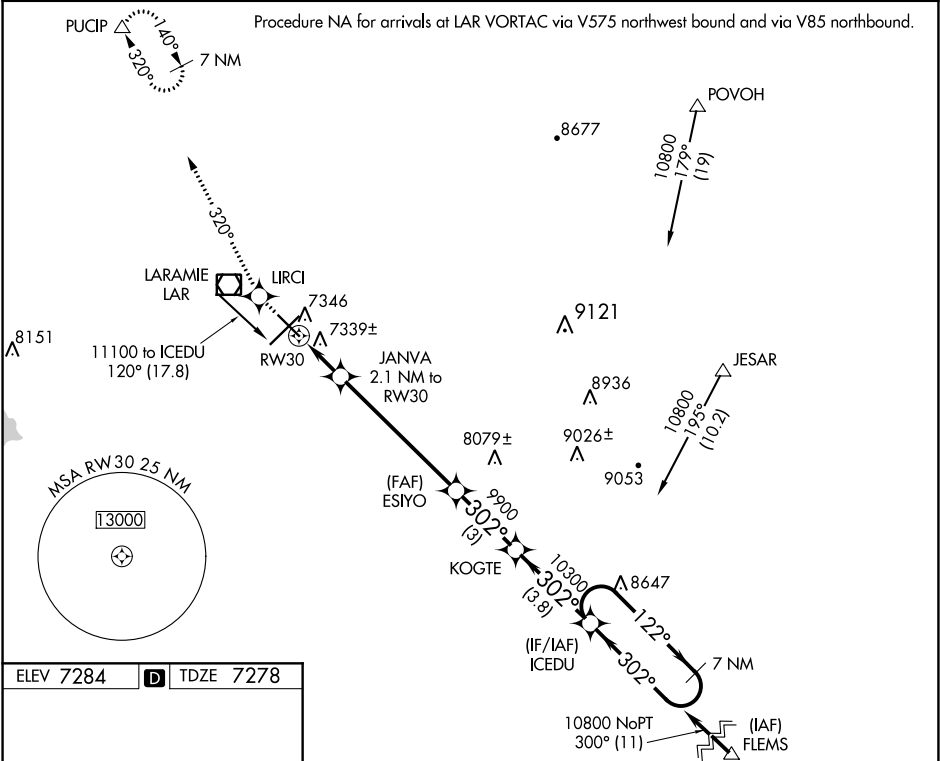
WAAS CH <b>53600</b> <b>W30A</b>	APP CRS <b>302°</b>	Rwy Idg TDZE Apt Elev	<b>6300</b> <b>7278</b> <b>7284</b>
--	------------------------	-----------------------------	---

RNAV (GPS) RWY 30

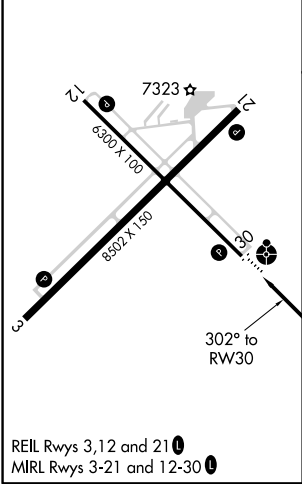
LARAMIE RGNL (L.A.R.)

-35°C	Inop table does not apply. DME/DME RNP-0.3 NA. For uncompensated Baro-VNAV systems, LNAV/VNAV NA below -29°C (-20°F) or above 35°C (95°F).	ODALS 	MISSED APPROACH: Climb to 9400 direct LIRCI and via 320° track to PUCIP and hold.
-------	--	-----------	--

ASOS <b>135.475</b>	DENVER CENTER <b>125.9 284.7</b>	UNICOM <b>123.05</b> (CTAF)
------------------------	-------------------------------------	--------------------------------



ELEV 7284		TDZE 7278
-----------	--	-----------



9400	LIRCI	tr 320°	PUCIP	ICEDU	7 NM Holding Pattern
*LNAV only	JANVA 2.1 NM to RW30	ESIYO	KOGTE	10800	GP 3.00° TCH 41
*0.9 NM to RW30	7980	9900	10300	122°	302°
0.9	1.2 NM	5.8 NM	3 NM	3.8 NM	
CATEGORY	A	B	C	D	
LPV DA	7528-1	250 (300-1)			
LNAV/VNAV DA	7629-1¼	351 (400-1¼)			
LNAV MDA	7600-1	322 (400-1)			
CIRCLING	7660-1¼ 376 (400-1¼)	7740-1¼ 456 (500-1¼)	7740-1½ 456 (500-1½)	7840-2 556 (600-2)	