

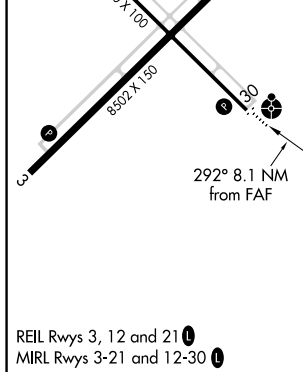
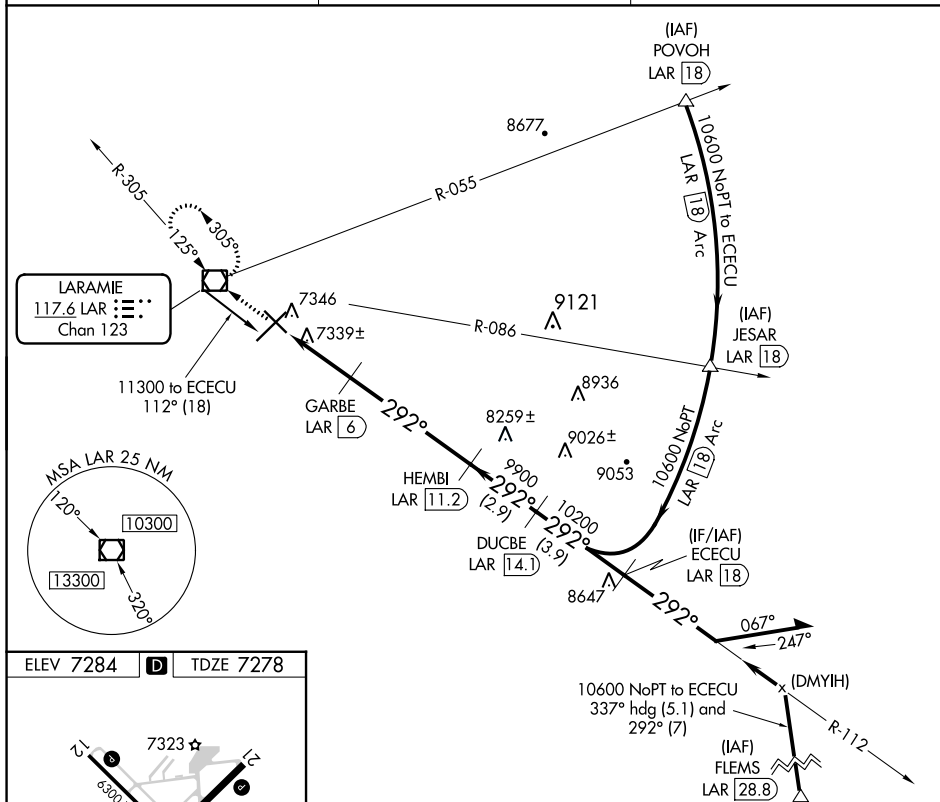


VOR/DME LAR <b>117.6</b> Chan <b>123</b>	APP CRS <b>292°</b>	Rwy Idg TDZE Apt Elev	<b>6300</b> <b>7278</b> <b>7284</b>
--	------------------------	-----------------------------	---

VOR/DME RWY 30  
LARAMIE RGNL (LAR)

 -35°C	ODALS 	MISSED APPROACH: Climb to 9600 direct LAR VOR/DME and hold, continue climb-in-hold to 9600.
---	--	---

ASOS <b>135.475</b>	DENVER CENTER <b>125.9 284.7</b>	UNICOM <b>123.05 (CTAF) 0</b>
------------------------	-------------------------------------	----------------------------------



CATEGORY	A	B	C	D
S-30	7600- $\frac{3}{4}$ 322 (400- $\frac{3}{4}$ )			7600-1 322 (400-1)
CIRCLING	7660-1 376 (400-1)	7740-1 456 (500-1)	7740-1 $\frac{1}{2}$ 456 (500-1 $\frac{1}{2}$ )	7840-2 556 (600-2)