

WAAS CH 50230 W26A	APP CRS 259°	Rwy Idg 6100 TDZE 4124 Apt Elev 4170
--	------------------------	---

RNAV (GPS) RWY 26

LEWISTOWN MUNI (LWT)

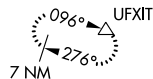
T For uncompensated Baro-VNAV systems, LNAV/VNAV
A NA below -26°C (-14°F) or above 50°C (123°F).
DME/DME RNP-0.3 NA.

MISSED APPROACH: Climb to 4600 then climbing right turn to 8400 direct UFXIT and hold, continue climb-in-hold to 8400.

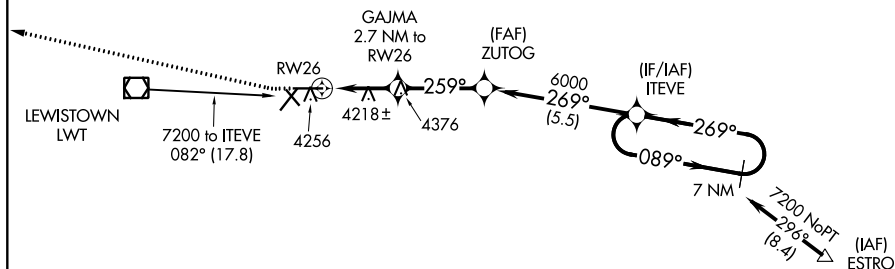
ASOS 118.375	SALT LAKE CENTER 133.4 285.4	UNICOM 123.0 (CTAF) 0
------------------------	--	---------------------------------

MISSED APCH FIX

Δ 5852

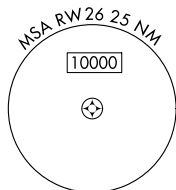


• 6127

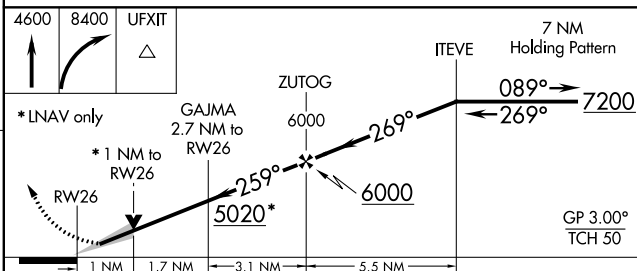
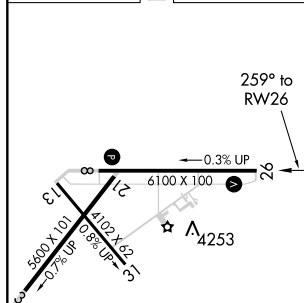



• 5680

● 6360



ELEV	4170	D	TDZE	4124
------	------	----------	------	------



CATEGORY		A	B	C	D
LPV	DA		4324- $\frac{3}{4}$	200 (200- $\frac{3}{4}$)	
LNAV/ VNAV	DA		4389- $\frac{7}{8}$	265 (300- $\frac{7}{8}$)	
LNAV	MDA		4480-1	356 (400-1)	
 CIRCLING		4680-1 510 (600-1)	4820-1 650 (700-1)	4980-2 $\frac{1}{4}$ 810 (900-2 $\frac{1}{4}$)	5240-3 1070 (1100-3)

REIL Rwys 8 and 26 **L**

MIRL Rwy's 3-21, 8-26 and 13-31 **L**

LEWISTOWN, MONTANA

Amdt 1 05JAN17

47°03'N-109°28'W

LEWISTOWN MUNI (LWT)

RNAV (GPS) RWY 26