

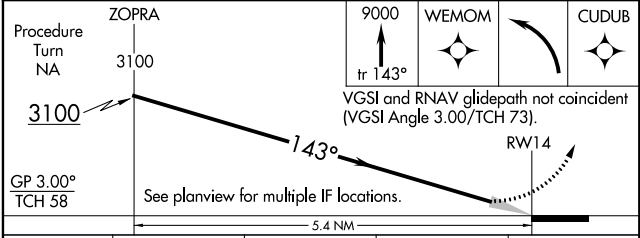
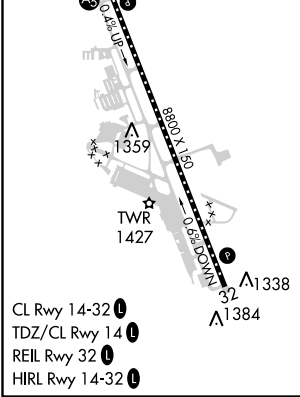
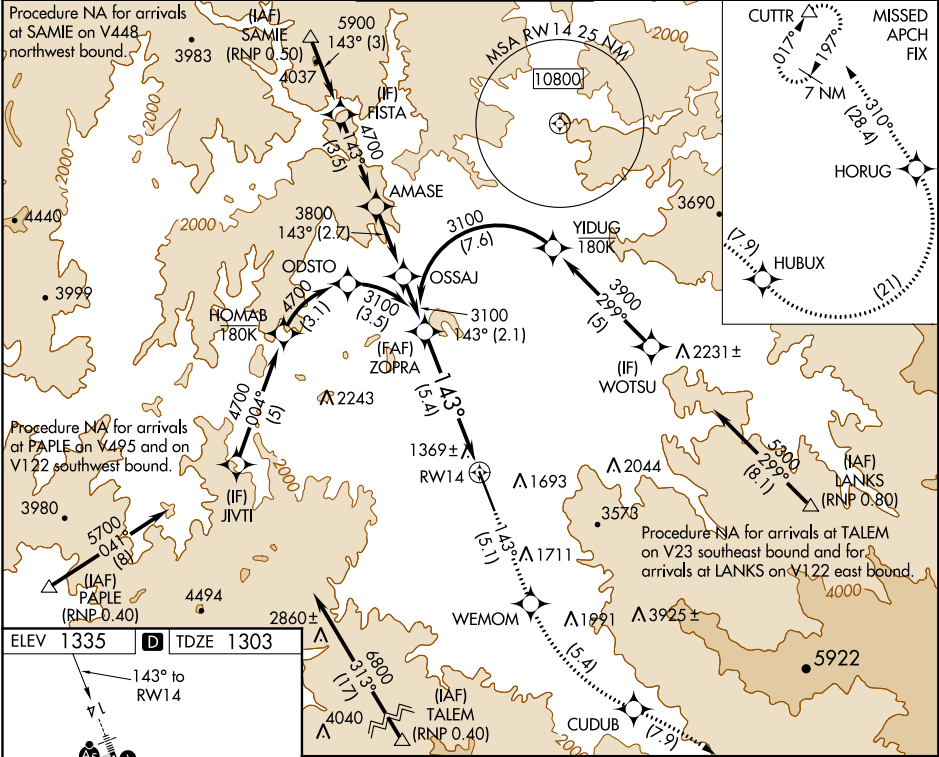


APP CRS	Rwy Idg	8800
143°	TDZE	1303
	Apt Elev	1335

RNAV (RNP) Z RWY 14
ROGUE VALLEY INTL-MEDFORD (MF'R)

 -3°C	GPS required. RF required. For uncompensated Baro-VNAV systems, procedure NA below -8°C (17°F) or above 46°C (115°F). For inop MALSR, increase RNP 0.30 DA* all Cats visibility to RVR 6000, increase RNP 0.30 DA all Cats visibility to 3. * Missed approach requires minimum climb of 259 feet per NM to 8300.	MALSR 	MISSED APPROACH: Climb to 9000 on track 143° to WEMOM, left turn to CUDUB, right turn to HUBUX, left turn to HORUG, then on track 310° to CUTTR and hold.
--	---	---	---

ATIS 127.25	CASCADE APP CON* 124.3 379.9	MEDFORD TOWER* 119.4 (CTAF) 0 257.8	GND CON 121.8	UNICOM 122.95
----------------	---------------------------------	--	------------------	------------------



CATEGORY	A	B	C	D
RNP 0.30 DA*		1665/40	362 (400-3/4)	
RNP 0.30 DA		2131-2 1/2	828 (800-2 1/2)	

AUTHORIZATION REQUIRED

NW-1, 31 DEC 2020 to 28 JAN 2021

NW-1, 31 DEC 2020 to 28 JAN 2021