

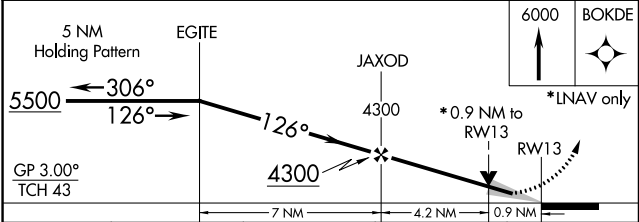
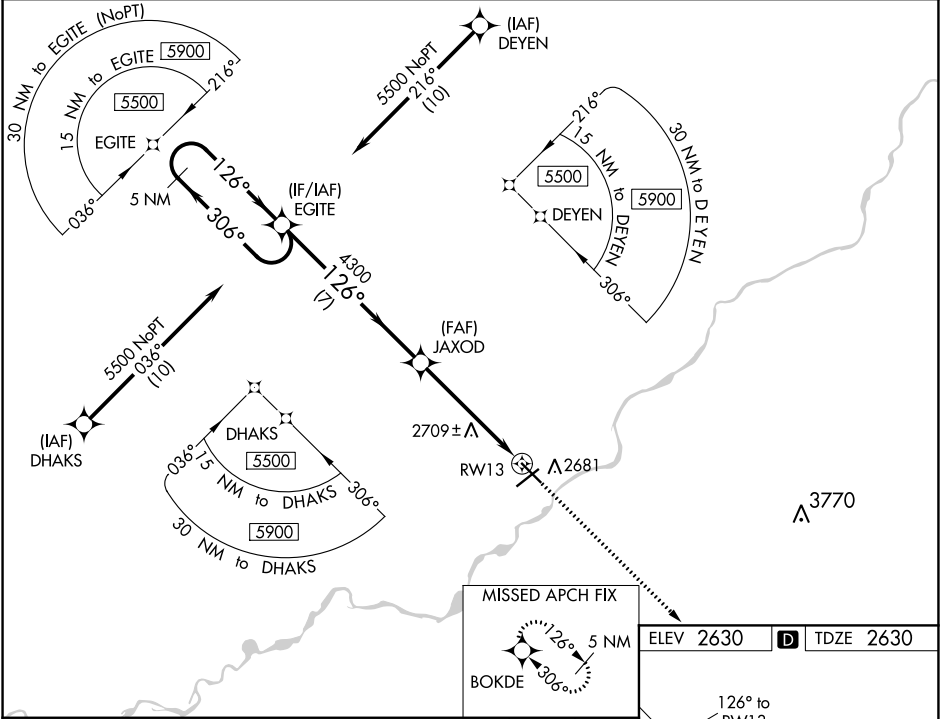
WAAS CH 97340 W13A	APP CRS 126°	Rwy Idg 5623 TDZE 2630 Apt Elev 2630
--	------------------------	---

RNAV (GPS) RWY 13
FRANK WILEY FIELD (MLS)

⚠ For uncompensated Baro-VNAV systems, LNAV/VNAV NA below -24°C (-11°F) or above 54°C (130°F). Baro-VNAV and VDP NA when using Forsyth altimeter setting. DME/DME RNP-0.3 NA. When local altimeter setting not received, use Forsyth altimeter setting; increase LPV and LNAV/VNAV DA to 2968 and all visibility 1/8 mile. Increase all MDA 100 feet and all Cat C and D visibility 1/4 mile.

MISSED APPROACH: Climb to 6000 direct BOKDE and hold, continue climb-in-hold to 6000.

ASOS 135.575	SALT LAKE CENTER 126.85 305.2	UNICOM 123.0 (CTAF) 1
------------------------	---	---------------------------------



CATEGORY	A	B	C	D
LPV DA		2880-1	250 (300-1)	
LNAV/VNAV DA		2880-1	250 (300-1)	
LNAV MDA		2960-1	330 (400-1)	
C CIRCLING	3060-1 430 (500-1)	3100-1 470 (500-1)	3120-1½ 490 (500-1½)	3320-2¼ 690 (700-2¼)

