

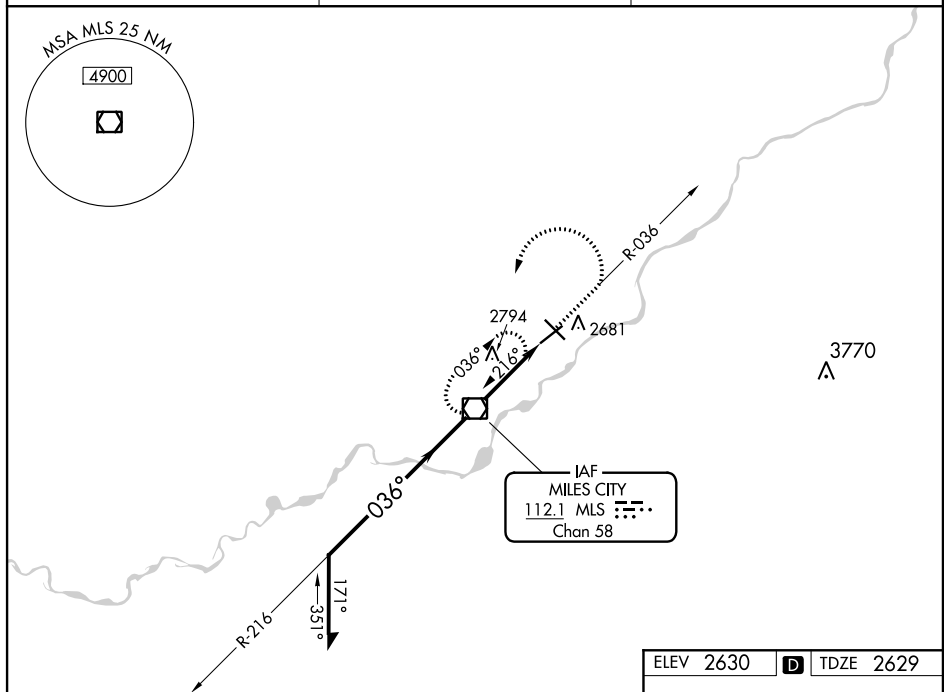
VOR/DME MLS 112.1 Chan 58	APP CRS 036°	Rwy Idg 5680 TDZE 2629 Apt Elev 2630
---	------------------------	---

VOR RWY 4
FRANK WILEY FIELD (MLS)

T When local altimeter setting not received, use Forsyth
A altimeter setting and increase all MDA 100 feet, and
increase S-4 Cat C visibility $\frac{1}{4}$ mile.

MISSED APPROACH: Climb to 4800 on MLS VOR/DME R-036 then climbing left turn to 6000 direct MLS VOR/DME and hold

ASOS 135.575	SALT LAKE CENTER 126.85 305.2	UNICOM 123.0 (CTAF) 0
------------------------	---	---------------------------------



VGSI and descent angles not coincident (VGSI Angle 3.00/TCH 40).	MLS VOR/DME
--	----------------

Remain
within 10 NM

5000

-216°

4800

6000

MLS

▲

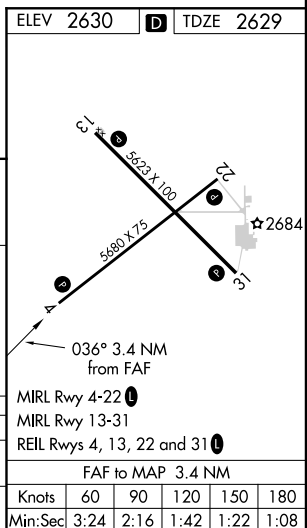
ML

3

[3]

--	--

CATEGORY	A	B	C	D
S-4	3060-1	431 (500-1)	3060-1 $\frac{1}{4}$ 431 (500-1 $\frac{1}{4}$)	NA
C CIRCLING	3060-1 430 (500-1)	3100-1 470 (500-1)	3120-1 $\frac{1}{2}$ 490 (500-1 $\frac{1}{2}$)	NA



VOR RWY 4