

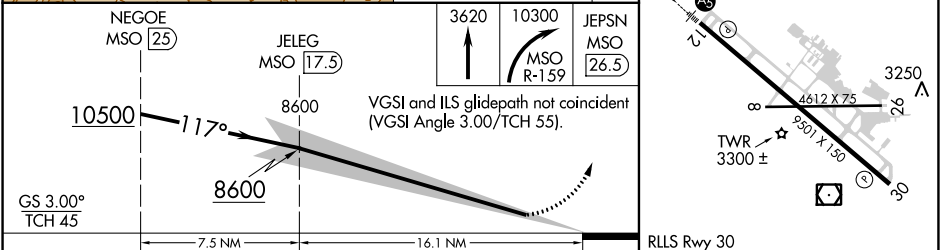
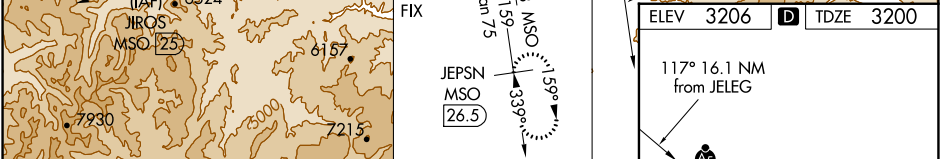
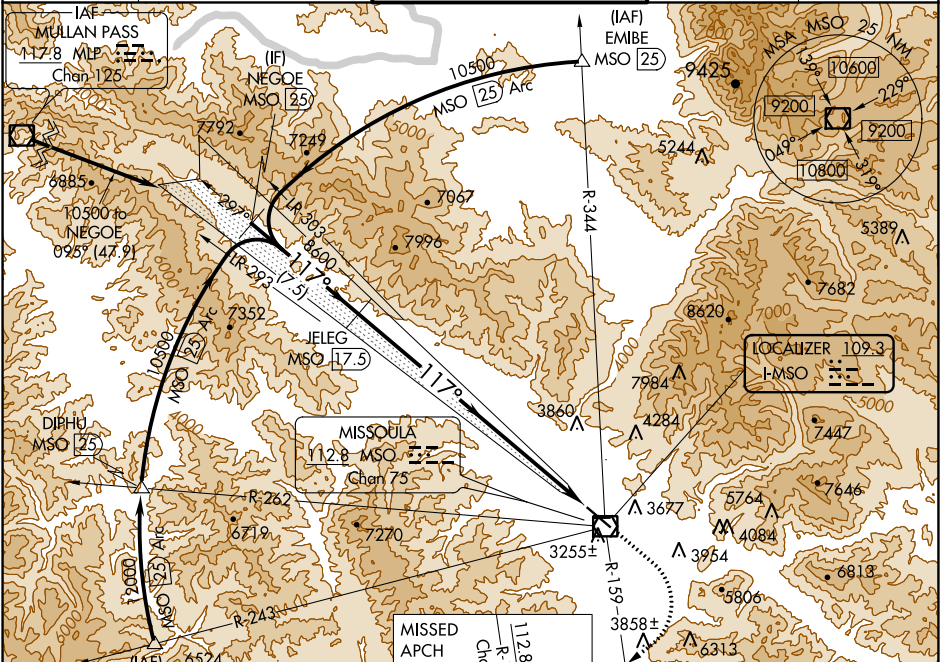
LOC I-MSO	APP CRS	Rwy Idg	9501
109.3	117°	TDZE	3200
		Apt Elev	3206

ILS Z RWY 12

MISSOULA INTL (MSO)

DME required.	MALSR	MISSED APPROACH: Climb to 3620 then dimbing right turn to 10300 on MSO VOR/DME R-159 to JEPSN/MSO 26.5 DME and hold. Missed approach requires minimum climb of 410 feet per NM to 9800; if unable to meet climb gradient, see ILS Y RWY 12.
-12°C		

ATIS	SPOKANE APP CON *	MISSOULA TOWER *	GND CON	UNICOM
126.65	124.9 298.95	118.4 (CTAF) 377.175	121.9	122.95



CATEGORY	A	B	C	D
S-ILS 12	3411/24	211 (300-1/2)		

NW-1, 31 DEC 2020 to 28 JAN 2021

NW-1, 31 DEC 2020 to 28 JAN 2021