

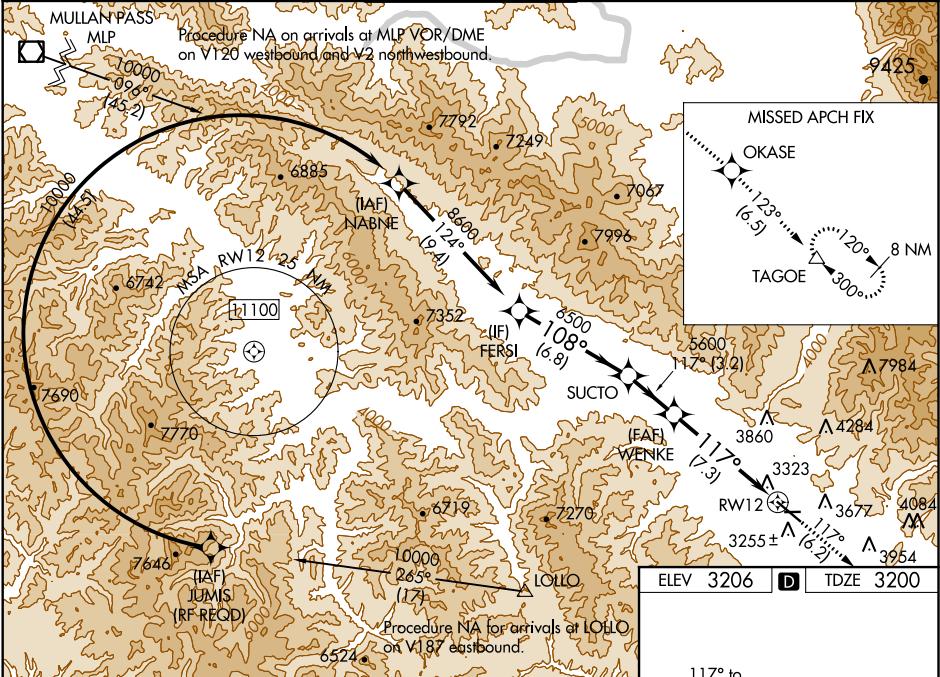
APP CRS	Rwy Idg	9501
117°	TDZE	3200
	Apt Elev	3206


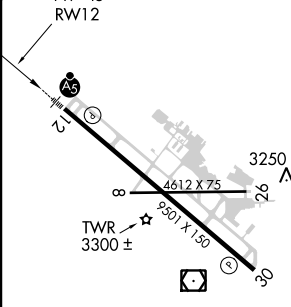

RNAV (RNP) Z RWY 12

MISSOULA INTL (MISO)

RNP AR apch.	MALSR	MISSED APPROACH: Climb to 13000 on track 117° to OKASE and on track 123° to TAGOE and hold, continue climb-in-hold to 13000. *Missed approach requires minimum climb of 350 feet per NM to 8300; if unable to meet climb gradient, see RNAV (GPS) Y RWY 12. #Missed approach requires minimum climb of 425 feet per NM to 8300.
 For uncompensated Baro-VNAV systems, LNAV/VNAV NA below -21° C (-6°F) or above 43°C (109°F). -12°C For inop ALS, increase RNP 0.12 all Cats visibility to RVR 6000. For inop ALS, increase RNP 0.30 all Cats visibility to 2½ SM. When local weather not received, procedure NA.		

ATIS 126.65	SPOKANE APP CON * 124.9 298.95	MISSOULA TOWER * 118.4 (CTAF) 0 377.175	GND CON 121.9	UNICOM 122.95
-----------------------	--	---	-------------------------	-------------------------



VGSI and RNAV glidepath not coincident (VGSI Angle 3.00/TCH 55).		13000 ↑ tr 117°	OKASE 	TAGOE tr 123° △	
FERSI	SUCTO	WENKE	RW12		
8600	6500	5600			
GP 3.00° TCH 45	6.8 NM	3.2 NM	7.3 NM		
CATEGORY	A	B	C	D	
RNP 0.12 DA#	3518/40		318 (400-¾)		RLLS Rwy 30 REIL Rwy 30 MIRL Rwy 8-26 HIRL Rwy 12-30 
RNP 0.30 DA*	3880-2		680 (700-2)		
AUTHORIZATION REQUIRED					

NW-1, 31 DEC 2020 to 28 JAN 2021

NW-1, 31 DEC 2020 to 28 JAN 2021