


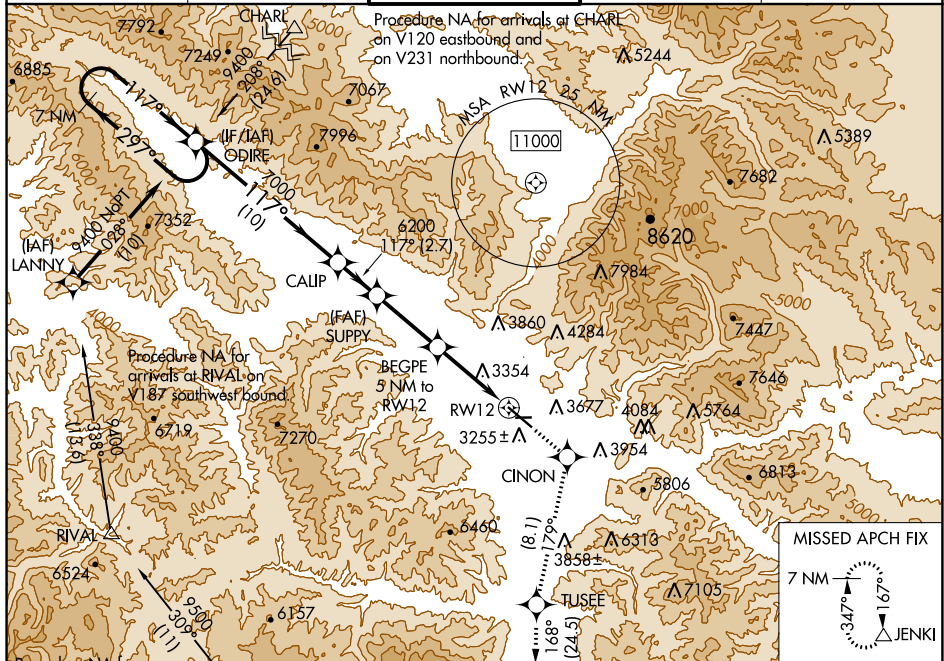


WAAS CH <b>65715</b> <b>W12B</b>	APP CRS <b>117°</b>	Rwy Idg <b>9501</b> TDZE <b>3200</b> Apt Elev <b>3206</b>
--	------------------------	---

RNAV (GPS) Y RWY 12  
MISSOULA INTL (MSO)

RNP apch.  Circling NA for Cats C and D northeast of Rwy 12-30. Inop table does not apply to LNAV # Cats C/D. Inop table does not apply to LPV† all Cats. **RVR 1800 authorized with use of FD or AP or HUD to DA.  -12°C		MALSR  MISSED APPROACH: (Do not exceed 200K until CINON) Climb to 12000 direct CINON and on track 179° to TUSEE and on track 168° to JENKI and hold, continue climb-in-hold to 12000. ## Missed approach requires minimum climb of 325 feet per NM to 7700.	
ATIS <b>126.65</b>	SPOKANE APP CON ★ <b>124.9 298.95</b>	MISSOULA TOWER ★ <b>118.4 (CTAF) 0 377.175</b>	GND CON <b>121.9</b>
		UNICOM <b>122.95</b>	



Procedure RNA for arrivals at JENKI on V231 southbound. EHRAY 721.5

11800 309° (25) JENKI

ELEV 3206 D TDZE 3200

117° to RW12

TWR 3300 ±

2501 X 150

4612 X 75

3250 A

7 NM Holding Pattern ODIRE

9400 ← 297° 117° → 117°

GP 3.00° TCH 55

7000

6200

6200

\*4840

10 NM 2.7 NM 4.3 NM 3.8 NM 1.2 NM

12000 CINON tr 179° TUSEE tr 168° JENKI

SUPPLY 6200

BEGPE 5 NM to RW12

\*LNAV only

\*1.2 NM to RW12

CATEGORY	A	B	C	D
LPV DA**	3400/24	200 (200-½)		
LPV DA†	4229-4	1029 (1100-4)		
LNAV MDA##	3640/24	440 (500-½)	3640/40	440 (500-¾)
LNAV MDA#	4520/40 1320 (1400-¾)	4520/55 1320 (1400-1)	4520-3	1320 (1400-3)
CIRCLING	4520-1¼ 1314 (1400-1¼)	4700-1½ 1494 (1500-1½)	4700-3 1494 (1500-3)	5140-3 1934 (2000-3)