

VOR/DME MSO <b>112.8</b> Chan <b>75</b>	APP CRS <b>339°</b>	Rwy Idg TDZE Apt Elev	<b>N/A</b> <b>N/A</b> <b>3206</b>
---	------------------------	-----------------------------	---

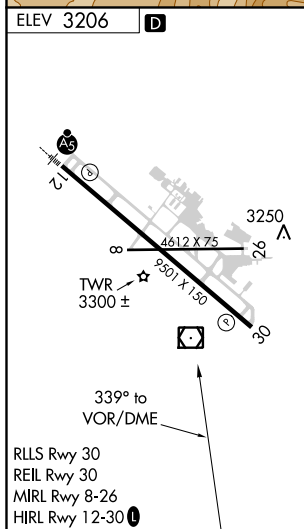
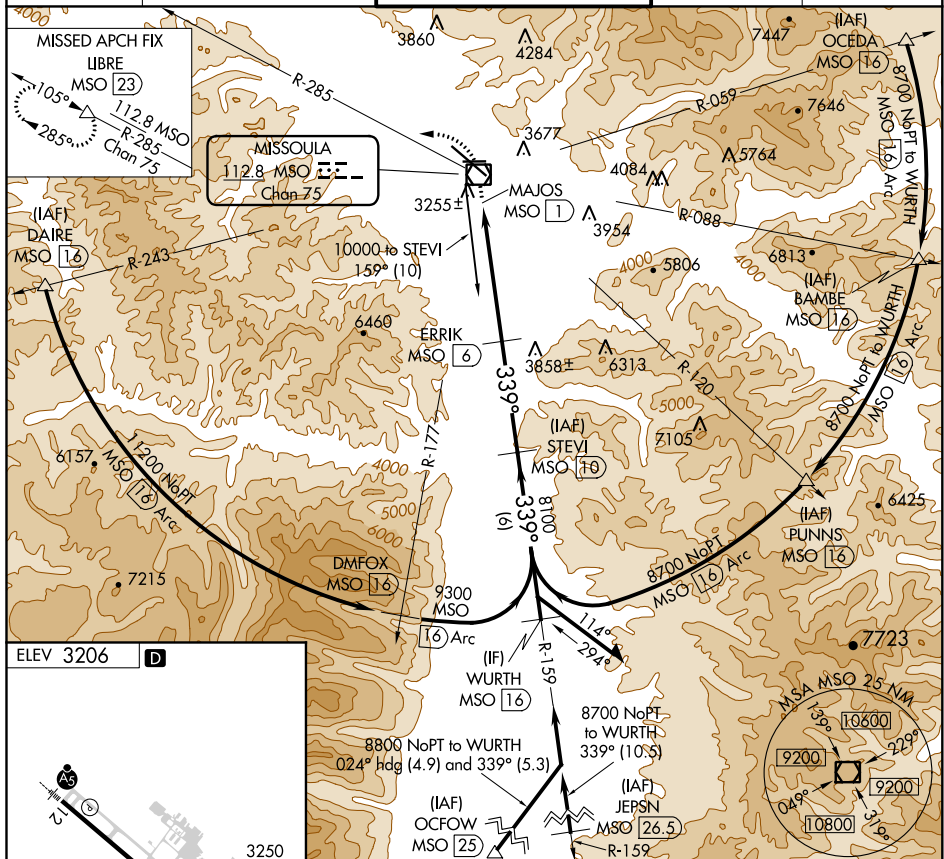
VOR-B

MISSOULA INTL (MSO)

RADAR required for procedure entry at JEPSN. DME required.

**MISSED APPROACH:** Climb to 9600 direct MSO VOR/DME and on MSO VOR/DME R-285 to LIBRE/MSO 23 DME and hold, continue climb-in-hold to 9600.

ATIS <b>126.65</b>	SPOKANE APP CON ★ <b>124.9 298.95</b>	MISSOULA TOWER ★ <b>118.4 (CTAF) 0 377.175</b>	GND CON <b>121.9</b>	UNICOM <b>122.95</b>
-----------------------	--	---	-------------------------	-------------------------



9600	MSO ↑	MSO R-285 ◻	LIBRE △	<div><div>STEV MSO 10</div><div>Remain within 10 NM</div><div>159°</div><div>10000</div><div>339°</div><div>6680</div><div>8100</div><div>1 NM</div><div>5 NM</div><div>4 NM</div></div>			
CATEGORY	A		B		C	D	
<div>C</div> CIRCLING	4920-1¼ 1714 (1800-1¼)		4920-1½ 1714 (1800-1½)		4920-3 1714 (1800-3)	5160-3 1954 (2000-3)	