

LOC I-PDT	APP CRS	Rwy Idg	6301
110.3	254°	TDZE	1487
		Apt Elev	1497

ILS or LOC RWY 26

EASTERN OREGON RGNL AT PENDLETON (PDT)

DME required.

▼

⚠

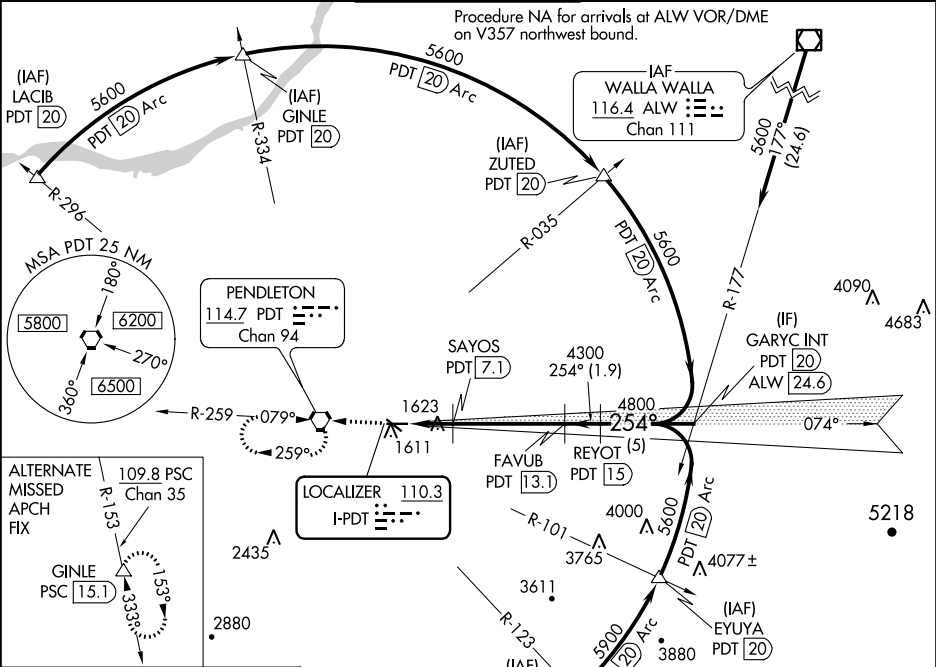
❄

Circling Rwy 11 NA at night. DME from PDT VORTAC.  
Simultaneous reception of I-PDT and PDT DME required.  
-22°C #RVR 1800 authorized with use of FD or AP or HUD to DA.

MALSR

MISSED APPROACH: Climb to 4000 direct PDT VORTAC and hold, continue climb-in-hold to 4000.

ASOS 118.325	CHINOOK APP CON * 133.15 379.15	PENDLETON TOWER * 119.7 (CTAF) 257.8	GND CON 121.9 257.8	UNICOM 122.95
-----------------	------------------------------------	---	------------------------	------------------



ELEV 1497	TDZE 1487
-----------	-----------

4000

PDT

VGSI and ILS glidepath not coincident (VGSI Angle 3.00/TCH 48).

GARYC INT

PDT 20

5600

254°

4800

4300

2320\*

1.1 NM

1.4 NM

6 NM

1.9 NM

5 NM

CATEGORY	A	B	C	D
S-ILS 26#	1687/24 200 (200-½)			
S-LOC 26	1880/24 393 (400-½)	1880/35 393 (400-¾)		
CIRCLING	1920-1 423 (500-1)	1960-1 463 (500-1)	1980-1½ 483 (500-1½)	2200-2¼ 703 (800-2¼)