

WAAS CH 73012 W08A	APP CRS 074°	Rwy Idg TDZE 1486 Apt Elev 1497
--	------------------------	---

RNAV (GPS) RWY 8

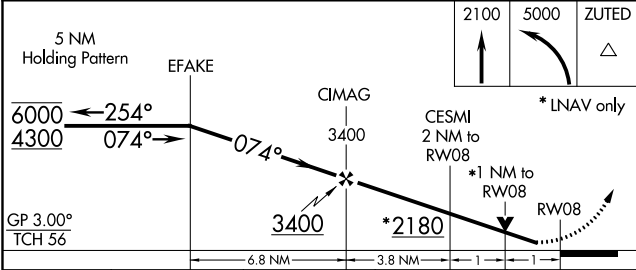
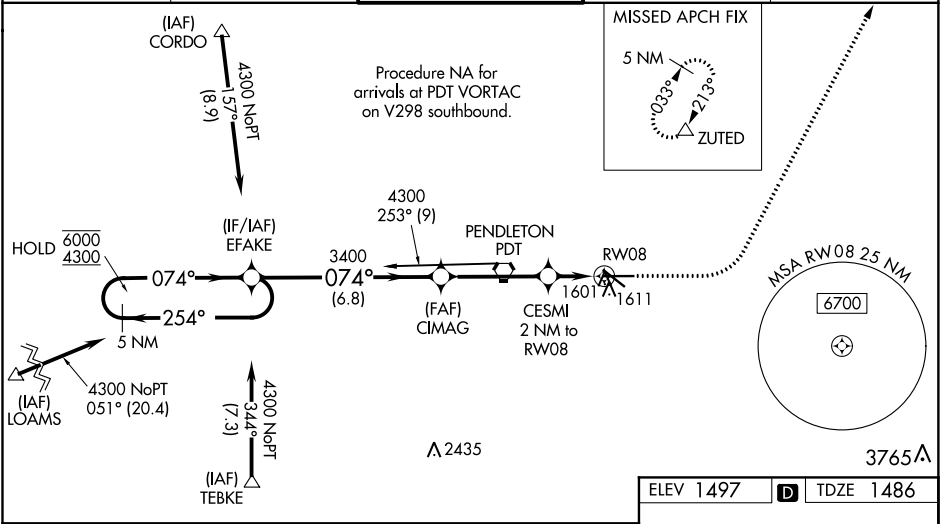
EASTERN OREGON RGNL AT PENDLETON (PDT)

RNP APCH.

Circling to Rwy 11 NA at night. Baro-VNAV and VDP NA when using Walla Walla altimeter setting. Rwy 8 helicopter visibility reduction below $\frac{3}{4}$ SM NA. For uncompensated Baro-VNAV systems, LNAV/VNAV NA below -17°C or above 54°C . Inop table does not apply to LPV all Cats and LNAV Cats C/D. When local altimeter setting not received, use Walla Walla altimeter setting and increase all DA 122 feet and all visibilities $\frac{1}{4}$ SM. Increase all MDA 140 feet and LNAV Cat C/D and Circling Cat C visibilities $\frac{1}{4}$ SM and Circling Cat D $\frac{1}{2}$ SM. For inop ALS, increase LNAV/VNAV all Cats visibility to $\frac{2}{3}$ SM. For inop ALS when using Walla Walla altimeter setting, increase LNAV/VNAV all Cats visibility to $1\frac{1}{2}$ SM.

MISSED APPROACH:
Climb to 2100 then climbing left turn 5000 to ZUTED and hold.

ASOS 118.325	CHINOOK APP CON* 133.15 379.15	PENDLETON TOWER* 119.7 (CTAF) 257.8	GND CON 121.9 257.8	UNICOM 122.95
------------------------	--	---	-------------------------------	-------------------------



CATEGORY	A	B	C	D
LPV DA		1736- $\frac{3}{4}$	250 (300- $\frac{3}{4}$)	
LNAV/VNAV DA		1769- $\frac{3}{4}$	283 (300- $\frac{3}{4}$)	
LNAV MDA	1860- $\frac{3}{4}$	374 (400- $\frac{3}{4}$)	1860-1	374 (400-1)
CIRCLING	1920-1 423 (500-1)	1960-1 463 (500-1)	1980-1 $\frac{1}{2}$ 483 (500-1 $\frac{1}{2}$)	2200-2 $\frac{1}{4}$ 703 (800-2 $\frac{1}{4}$)

ELEV 1497 D TDZE 1486

REIL Rwy 11 and 29
MIRL Rwy 11-29
HIRL Rwy 8-26