
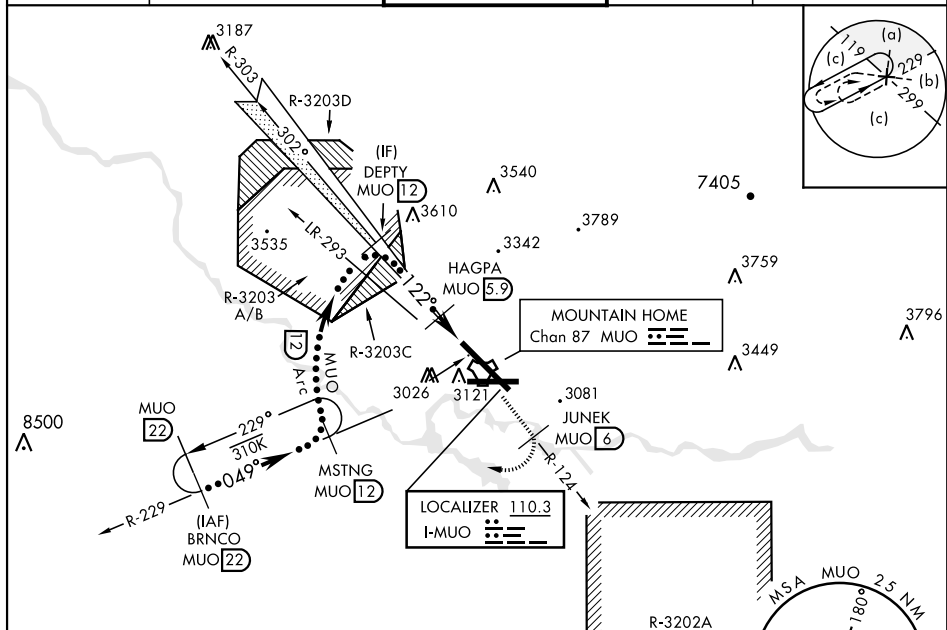


HI-ILS or LOC Y RWY 12

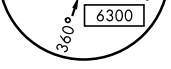
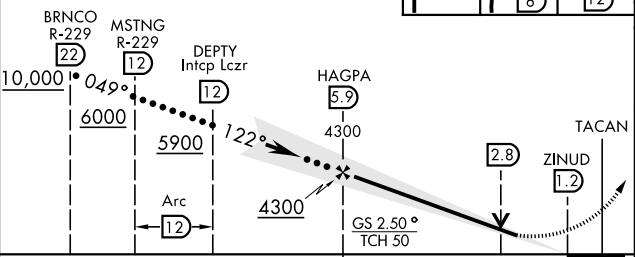
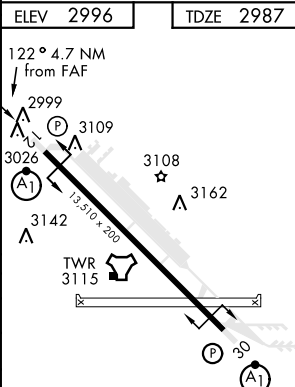
LOC I-MUO 110.3	APCH CRS 122°	Rwy Idg 13,510 TDZE 2987 Arpt Elev 2996	JAL-323 [USAF]	MOUNTAIN HOME AFB (KMUO)
* When ALS inop, increase CAT CDE RVR to 40 and vis to $\frac{3}{4}$ mile. ** When ALS inop, increase CAT CDE vis to 1 $\frac{3}{4}$ miles. *** Circling NA NE of Rwy 12-30.			ALSF-1 	MISSED APPROACH: Climb to 10,000 via MUO R-124 to JUNEK/6 DME, turn right and intercept MUO R-229 to MSTNG/12 DME and hold. Continue climb in hold to 10,000.

ATIS 273.5	MOUNTAIN HOME APP CON 124.8 259.1	MOUNTAIN HOME TOWER 133.85 253.5	GND CON 120.5 275.8	CLNC DEL 127.1 290.425
----------------------	---	--	-------------------------------	----------------------------------



RADAR or DME REQUIRED

EMERG SAFE ALT 100 NM 14,200

VGSI and ILS glidepath not coincident (VGSI Angle 2.50/TCH 41).				10,000 MUO R-124	JUNEK MUO 6	MSTNG MUO R-229 12		
								
CATEGORY	C		D	E				
S-ILS 12 *	3190/24		203	(200-½)				
S-LOC 12 **	3460/50		473	(500-1)				
*** CIRCLING	3560-1½ 564 (600-1½)		3560-2 564 (600-2)		3700-2½ 704 (800-2½)			HIRL Rwy 12-30

MOUNTAIN HOME, IDAHO

43°03'N-115°52'W

MOUNTAIN HOME AFB (KMUO)

Amdt 3 18JUN20

HI-ILS or LOC Y RWY 12