
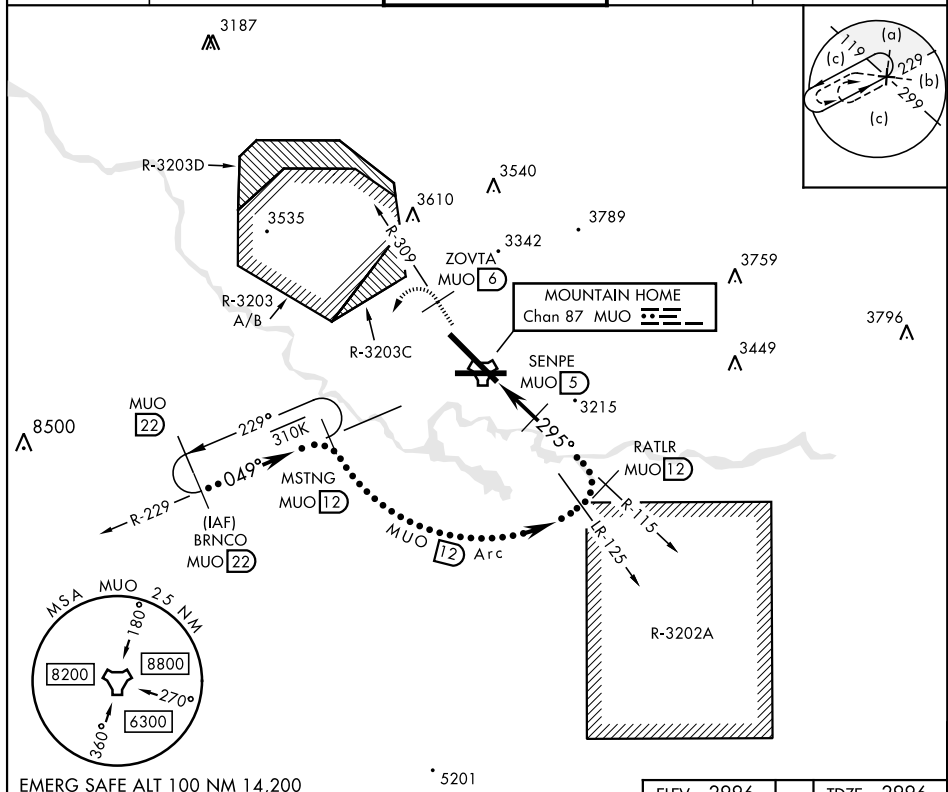


## HI-TACAN Y RWY 30

TACAN Chan <b>87</b>	MUO <b>295°</b>	APCH CRS <b>295°</b>	Rwy Idg <b>13,510</b> TDZE <b>2996</b> Arpt Elev <b>2996</b>	JAL-323 [USAF]	MOUNTAIN HOME AFB (KMUO)
<p><b>T</b> * When ALS inop, increase CAT CDE vis to 1 1/2 miles.          ** Circling NA NE of Rwy 12-30.</p>				<p>ALSF-1  </p>	<p>MISSED APPROACH: Climb to 10,000 via MUO R-309 to ZOVT/6 DME, turn left and intercept MUO R-229 to MSTNG/12 DME and hold. Continue climb in hold to 10,000.</p>
ATIS <b>273.5</b>	MOUNTAIN HOME APP CON <b>124.8 259.1</b>		MOUNTAIN HOME TOWER <b>133.85 253.5</b>	GND CON <b>120.5 275.8</b>	CLNC DEL <b>127.1 290.425</b>



EMERG SAFE ALT 100 NM 14,200

[illegible]

MOUNTAIN HOME, IDAHO

43°03'N-115°52'W

MOUNTAIN HOME AFB (KMUO)

## HI-TACAN Y RWY 30