
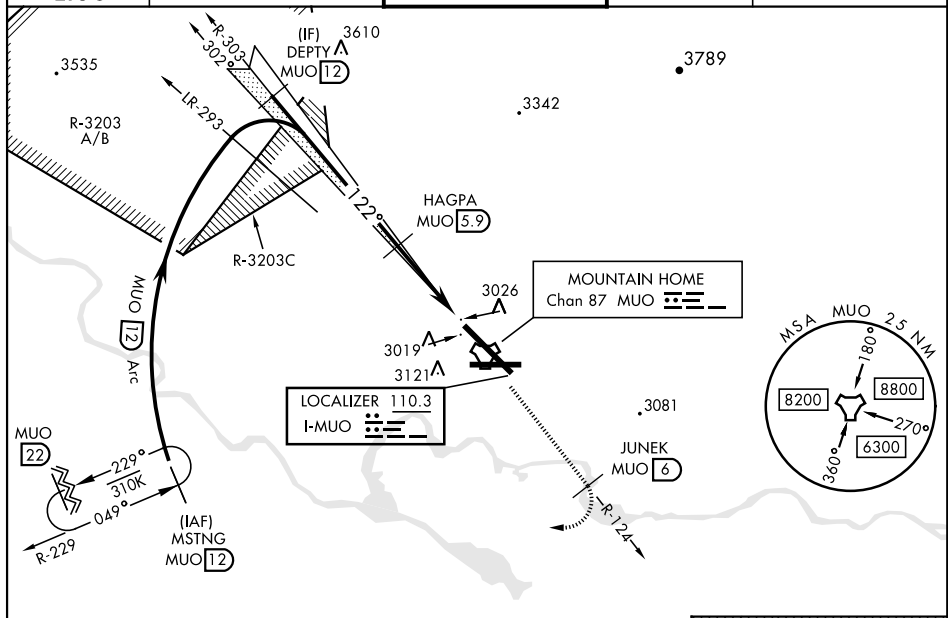


## ILS or LOC Z RWY 12

LOC 1-MUO <b><u>110.3</u></b>	APCH CRS <b>122°</b>	Rwy Idg <b>13,510</b> TDZE <b>2987</b> Arpt Elev <b>2996</b>	AL-323 [USAF]	MOUNTAIN HOME AFB (KMUO)	
<b>▼</b> * When ALS inop, increase RVR to 40, vis to $\frac{3}{4}$ mile. ** When ALS inop, increase CAT AB RVR to 55 and vis to 1 mile, CAT CDE vis to $1\frac{3}{4}$ miles. *** Circling NA NE of Rwy 12-30.			ALSF-1 	MISSED APPROACH: Climb to 10,000 via MUO R-124 to JUNEK/6 DME, turn right and intercept MUO R-229 to MSTNG/12 DME and hold. Continue climb in hold to 10,000.	
ATIS <b>273.5</b>	MOUNTAIN HOME APP CON <b>124.8 259.1</b>		MOUNTAIN HOME TOWER <b>133.85 253.5</b>		GND CON <b>120.5 275.8</b>
				CLNC DEL <b>127.1 290.425</b>	



## RADAR or DME REQUIRED

EMERG SAFE ALT 100 NM 14,200

