

TACAN Z RWY 12

TACAN MUO Chan 87	APCH CRS 129°	Rwy Idg 13,510 TDZE 2987 Arprt Elev 2996
-------------------	---------------	------------------------------------------------

AL-323 [USAF]

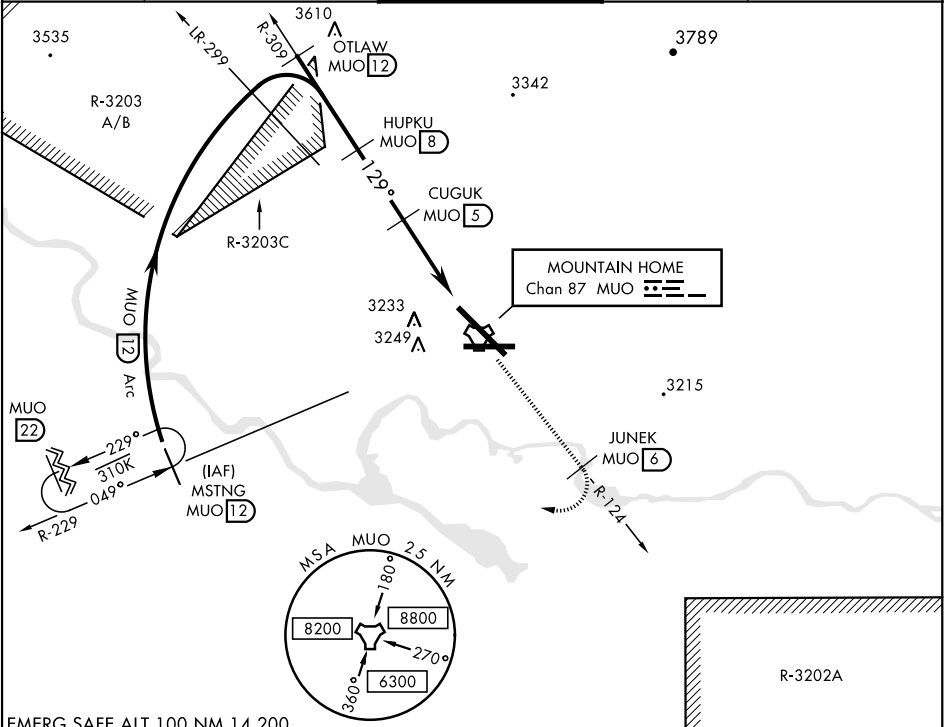
MOUNTAIN HOME AFB (KMUO)

▼ * When ALS inop, increase CAT AB RVR to 55 and vis to 1 mile, CAT CDE vis to 1½ miles.
** Circling NA NE of Rwy 12-30.

ALSF-1
A1

MISSED APPROACH: Climb to 10,000 via MUO R-124 to JUNEK/6 DME, turn right and intercept MUO R-229 to MSTNG/12 DME and hold. Continue climb in hold to 10,000.

ATIS 273.5	MOUNTAIN HOME APP CON 124.8 259.1	MOUNTAIN HOME TOWER 133.85 253.5	GND CON 120.5 275.8	CLNC DEL 127.1 290.425
------------	-----------------------------------	----------------------------------	---------------------	------------------------



EMERG SAFE ALT 100 NM 14,200

VGSI and descent angles not coincident (VGSI Angle 2.50/TCH 41).

10,000 MUO R-124 JUNEK MUO 6 MSTNG MUO R-229

129° to TACAN

129°

2.91° TCH 41

3.8 NM

TACAN ZIBTU 1.2

129° to TACAN

13.510 x 200

TWR 3115

3108 3162 3142 3115 3108 3162

30

A1

CATEGORY	A	B	C	D	E
S-12 *	3480/40 493 (500-¾)		3480/50 493 (500-1)		
CIRCLING **	3520-1 524 (600-1)	3560-1 564 (600-1)	3560-1½ 564 (600-1½)	3560-2 564 (600-2)	3700-2½ 704 (800-2½)

HIRL Rwy 12-30

TACAN Z RWY 12

NW-1, 31 DEC 2020 to 28 JAN 2021

NW-1, 31 DEC 2020 to 28 JAN 2021