

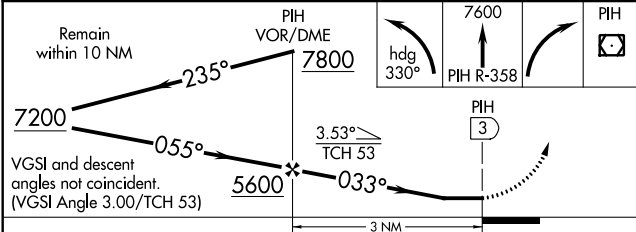
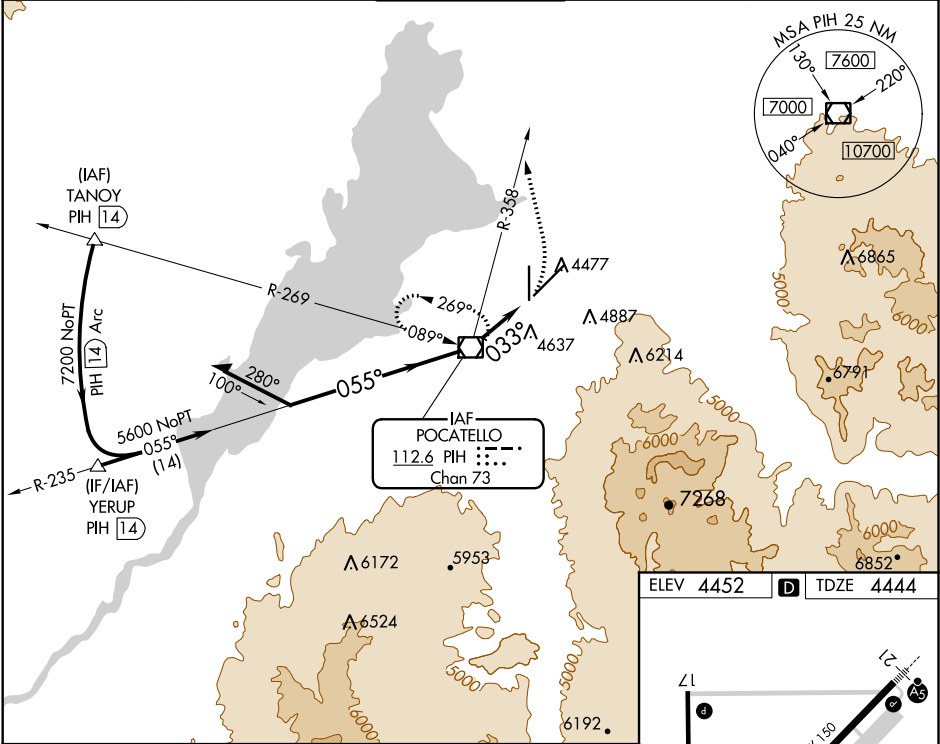
VOR/DME PIH	APP CRS	Rwy Idg	9059
112.6	033°	TDZE	4444
Chan 73		Apt Elev	4452

VOR RWY 3  
POCATELLO RGNL (PIH)

**⚠** Circling to Rwy 35 NA at night. When VGSI inop, Straight-In/Circling Rwy 3 procedure NA at night. Circling NA southeast of Rwy 3-21. Visibility reduction by helicopters NA. When local altimeter setting not received, use Idaho Falls altimeter setting and increase all MDA 140 feet, and increase visibility S-3 Cat C ½ mile and Circling Cat C ¼ mile.

**MISSED APPROACH:** Climbing left turn on heading 330° and PIH VOR/DME R-358 to 7600 then right turn direct PIH VOR/DME and hold.

ATIS 135.625	SALT LAKE CENTER 128.35 239.25	POCATELLO TOWER* 119.1 (CTAF) 0 257.8	GND CON 121.9	UNICOM 122.95
-----------------	-----------------------------------	--	------------------	------------------



ELEV 4452 TDZE 4444

033° 3 NM from FAF

HIRL Rwy 3-21  
MIRL Rwy 17-35  
REIL Rws 3 and 17

FAF to MAP 3 NM

Knots	60	90	120	150	180
Min:Sec	3:00	2:00	1:30	1:12	1:00

NW-1, 31 DEC 2020 to 28 JAN 2021

NW-1, 31 DEC 2020 to 28 JAN 2021