

PORTLAND, OREGON

HI-ILS or LOC RWY 28R

LOC/DME I-AP 111.3 Chan 50	APCH CRS 283°	Rwy Idg 9290 TDZE 31 Arpt Elev 31
--	-------------------------	--

JAL-330 [USAF]

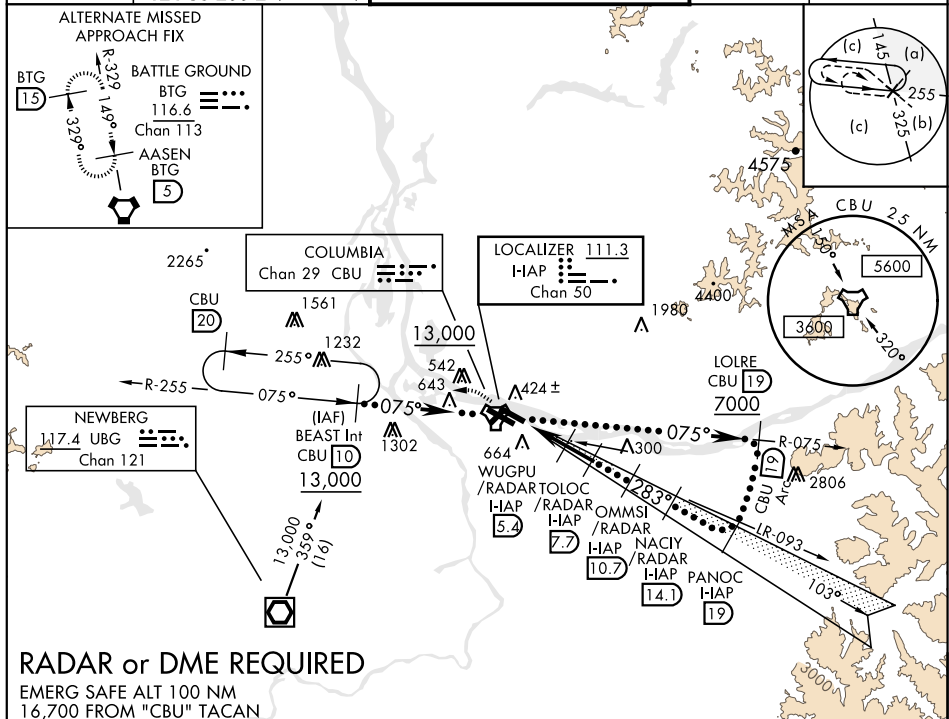
PORTLAND INTL (KPDX)

T * When ALS inop, increase CAT E RVR to 40.
** When ALS inop, increase CAT E vis to 1½.



MISSED APPROACH: Climb to 600 then climbing left turn to 4000 on CBU TACAN R-255 to BEAST INT/CBU 10 DME and hold, continue climb in holding to 4000.

ATIS		PORTLAND APP CON		PORTLAND TOWER		GND CON		CLNC DEL	
128.35	269.9	118.1	284.6 (100°-279°)	118.7	257.8 Rwy 10L-28R	121.9	348.6	120.125	318.1
		124.35	299.2 (280°-099°)	123.775	251.125 Rwy 3-21, 10R-28L				



RADAR or DME REQUIRED

EMERG SAFE ALT 100 NM
16,700 FROM "CBU" TACAN

[illegible]

PORTLAND, OREGON

45°35'N-122°36'W

PORTLAND INTL (KPDX)

Amdt 4 01FEB18

HI-ILS or LOC RWY 28R