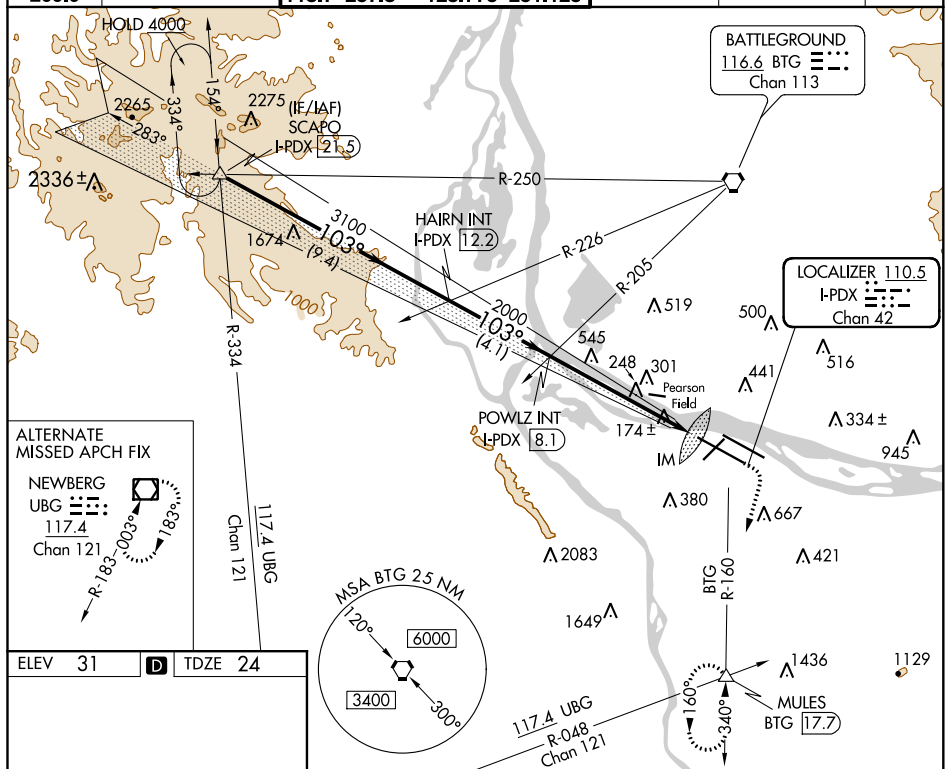


ILS RWY 10R (SA CAT I)  
PORTLAND INTL (PDX)

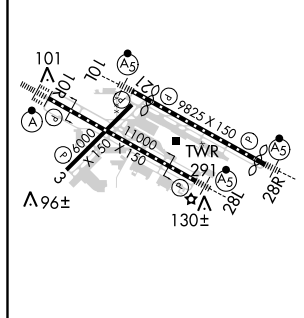
ALSF-2

**MISSED APPROACH:** Climb to 1100 then climbing right turn to 5000 on BTG VORTAC R-160 to MULES/BTG 17.7 DME and hold, continue climb-in-hold to 5000.

D-ATIS <b>128.35</b> 269.9	PORTLAND APP CON <b>124.35 299.2</b>	PORTLAND TOWER Rwy 10L-28R Rwy 3-21, 10R-28L <b>118.7 257.8 123.775 251.125</b>		GND CON <b>121.9 348.6</b>	CLNC DEL <b>120.125 318.1</b>	CPDLC
----------------------------------	---	---	--	-------------------------------	----------------------------------	-------



ELEV	31	<b>D</b>	TDZE	24
------	----	----------	------	----



REIL Rwy 3 and 21  
TDZ/CL Rwy 10R  
MIRL Rwy 3-21  
HIRL Rwy 10L-28R and 10R-28L

SCAPO I-PDX (21.5)

VGSI and ILS glidepath not coincident (VGSI Angle 3.00/TCH 71).

HAIRN INT I-PDX (12.2)

POWLZ INT I-PDX (8.1)

1100

5000

MULES

BTG R-160

△

4000

103°

3100

2000

2000

IM

GS 3.00° TCH 53

9.4 NM

4.1 NM

6 NM

104.9°

CATEGORY	A	B	C	D
----------	---	---	---	---

S-ILS 10R	RA 157/14 150	DA 174
-----------	---------------	--------

SA CATEGORY I ILS-SPECIAL AIRCREW  
& AIRCRAFT CERTIFICATION REQUIRED

NW-1, 31 DEC 2020 to 28 JAN 2021

NW-1, 31 DEC 2020 to 28 JAN 2021