

APP CRS	Rwy Idg	11000
283°	TDZE	23
	Apt Elev	31

RNAV (RNP) Y RWY 28L

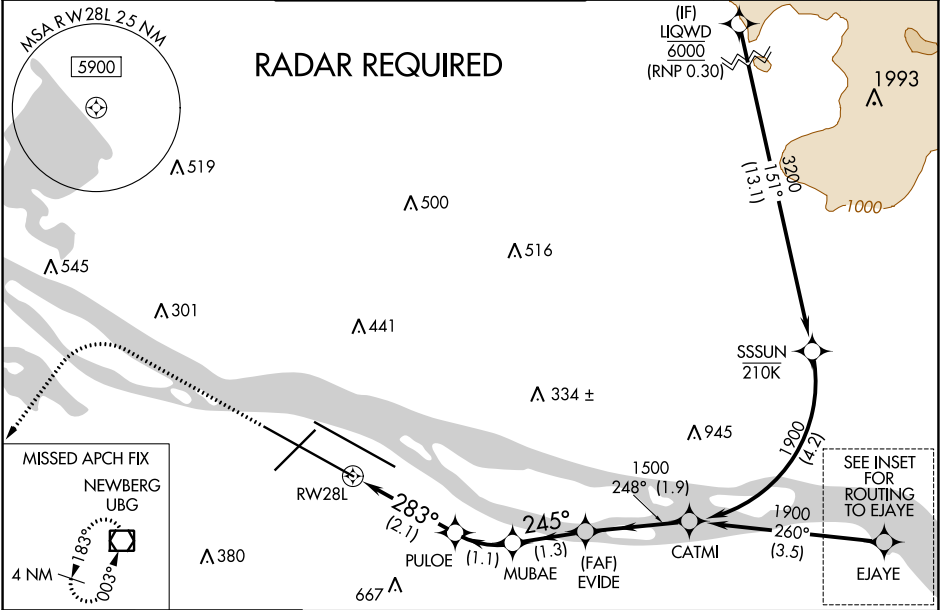
PORTLAND INTL (PDX)

For uncompensated Baro-VNAV systems, procedure NA below -7°C (20°F) or above 54°C (130°F). For inop MALSR, increase RNP 0.23 all Cats visibility to RVR 5600 and increase RNP 0.30 all Cats visibility to 1½ mile. Simultaneous approach authorized with Rwy 28R. RF required. GPS required. Use of FD or AP providing RNAV track guidance required during simultaneous operations.

MALSR

MISSED APPROACH: Climb to 2100 then climbing left turn to 4000 direct UBG VOR/DME and hold.

D-ATIS	PORTLAND APP CON	PORTLAND TOWER	GND CON	CLNC DEL	CPDLC
128.35	124.35 299.2	Rwy 10L-28R 118.7 257.8	Rwys 3-21, 10R-28L 123.775 251.125	121.9 348.6	120.125 318.1
269.9					



ELEV 31

D

TDZE 23

MIRL Rwy 3-21
TDZ/CL Rwy 10R
REIL Rwys 3 and 21
HIRL Rwys 10L-28R and 10R-28L

ROUTING TO EAJE (not to scale)

VGS and RNAV glidepath not coincident (VGS Angle 3.00°/TCH 72).

See planview for multiple IF locations.

CATEGORY	A	B	C	D
RNP 0.23 DA	370/33	347 (400-5%)		
RNP 0.30 DA	476/53	453 (500-1)		

AUTHORIZATION REQUIRED

NW-1, 31 DEC 2020 to 28 JAN 2021

NW-1, 31 DEC 2020 to 28 JAN 2021