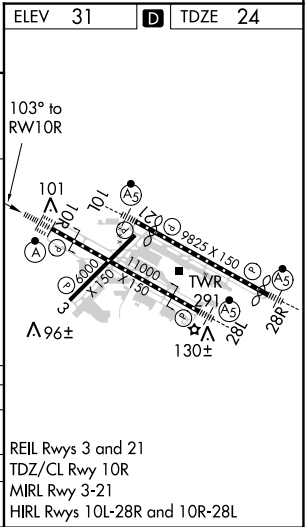
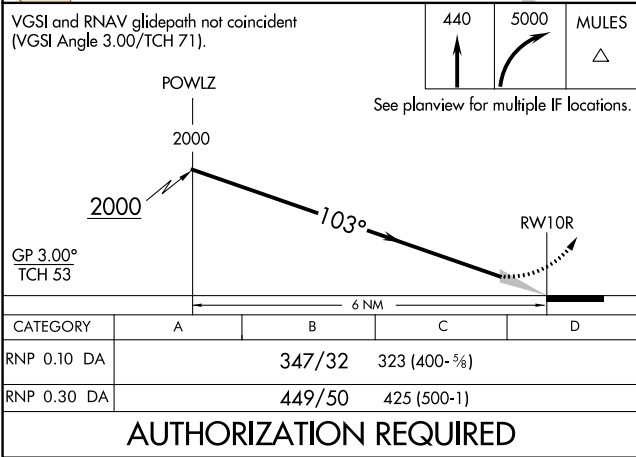
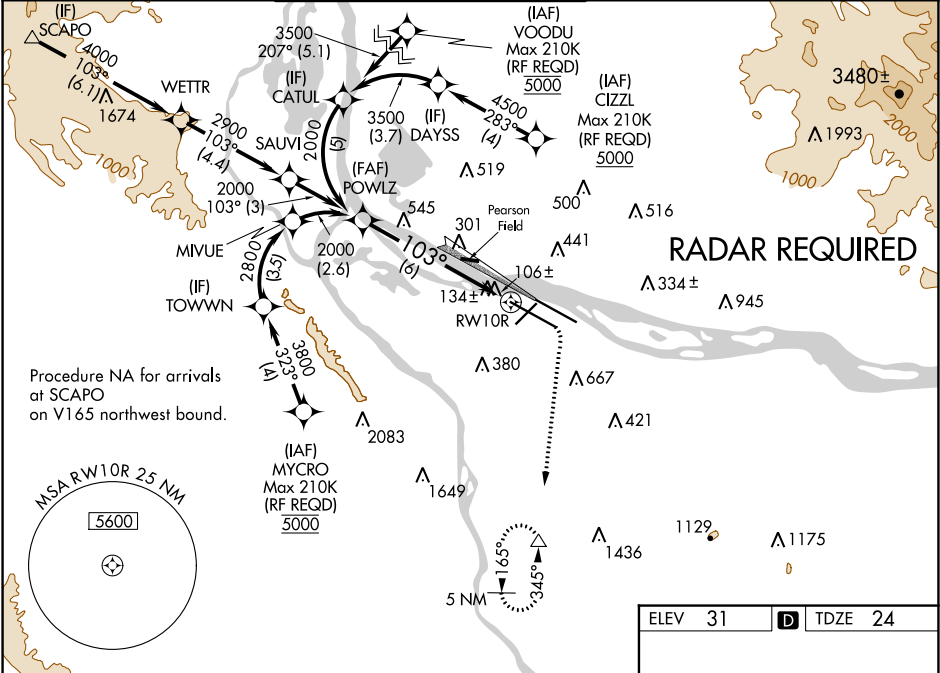


APP CRS	Rwy Idg	11000
103°	TDZE	24
	Apt Elev	31

RNAV (RNP) Z RWY 10R
PORTLAND INTL (PDX)

GPS required. For inoperative ALSF, increase RNP 0.10 all Cats visibility to RVR 5000 and 0.30 all Cats visibility to 1 1/2 miles. For uncompensated Baro-VNAV systems, procedure NA below -15°C (5°F) or above 54°C (130°F). Simultaneous approach authorized with Rwy 10L. Use of FD or AP providing RNAV track guidance required during simultaneous operations.	ALSF-2 	MISSED APPROACH: Climb to 440 then climbing right turn to 5000 direct MULES and hold, continue climb-in-hold to 5000.
---	------------	---

D-ATIS 128.35 269.9	PORTLAND APP CON 124.35 299.2	PORTLAND TOWER Rwy 10L-28R 118.7 257.8 Rwys 3-21, 10R-28L 123.775 251.125	GND CON 121.9 348.6	CINC DEL 120.125 318.1	CPDLC
---------------------------	----------------------------------	---	------------------------	---------------------------	-------



NW-1, 31 DEC 2020 to 28 JAN 2021

NW-1, 31 DEC 2020 to 28 JAN 2021