

APP CRS <b>283°</b>	Rwy Idg <b>11000</b> TDZE <b>23</b> Apt Elev <b>31</b>
------------------------	--

## RNAV (RNP) Z RWY 28L

PORTLAND INTL (PDX)

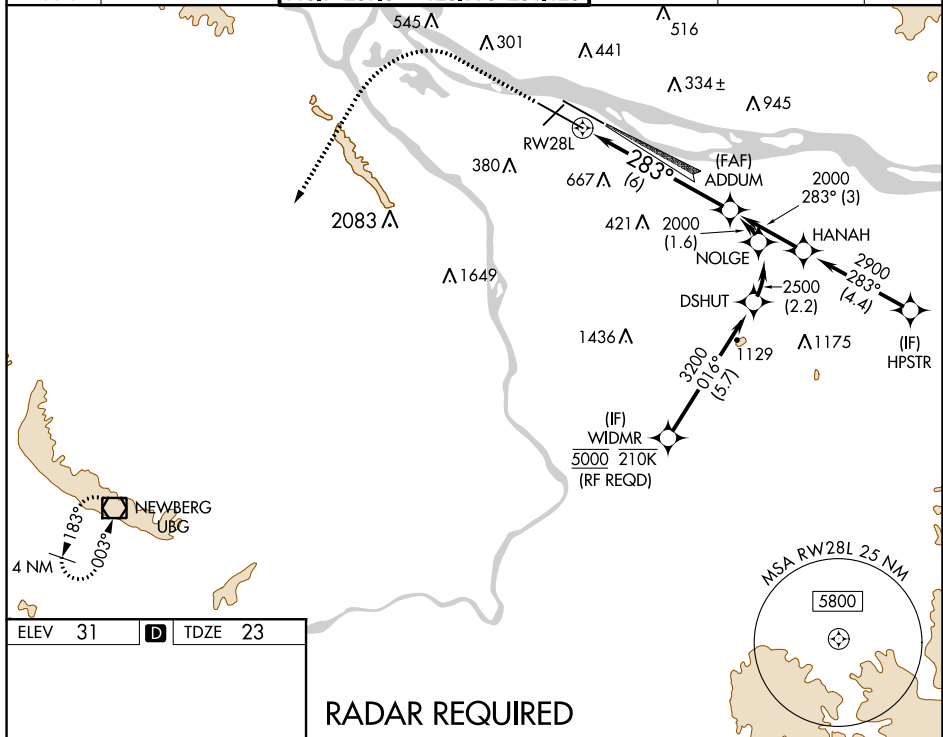
**T** For uncompensated Baro-VNAV systems, procedure NA below -15°C (5°F) or above 54°C (130°F). For inoperative MALS/R, increase RNP 0.27 all Cats visibility to RVR 6000 and increase RNP 0.30 all Cats visibility to 1½ mile. Simultaneous approach authorized with Rwy 28R. GPS Required. Use of FD or AP providing RNAV track guidance required during simultaneous operations.

MALSR



**MISSED APPROACH:** Climb to 2100 then climbing left turn to 4000 direct UBG VOR/DME and hold.

D-ATIS 128.35 269.9	PORTLAND APP CON 124.35 299.2	PORTLAND TOWER Rwy 10L-28R Rwyys 3-21, 10R-28L 118.7 257.8 123.775 251.125		GND CON 121.9 348.6	CLNC DEL 120.125 318.1	CPDLC
---------------------------	----------------------------------	--	--	------------------------	---------------------------	-------



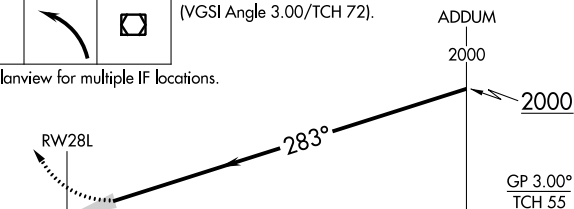
ELEV	31	<b>D</b>	TDZE	23
------	----	----------	------	----

REIL Rwy 3 and 21  
TDZ/CL Rwy 10R  
MIRL Rwy 3-21  
HIRL Rwy 10L-28R and 10R-28L

## RADAR REQUIRED

2100	4000	UBG	VGSI and RNAV glidepath not coincident (VGSI Angle 3.00/TCH 72).
------	------	-----	--

See Planview for multiple IF locations.



	6 NM			
CATEGORY	A	B	C	D
RNP 0.27 DA	374/35 351 (400-5%)			
RNP 0.30 DA	494/60 471 (500-1¼ )			

**AUTHORIZATION REQUIRED**