

WAAS CH 60905 W28A	APP CRS 283°	Rwy Idg TDZE Apt Elev	9290 31 31
--	------------------------	-----------------------------	---------------------------------------

RNAV (GPS) X RWY 28R
PORTLAND INTL (PDX)

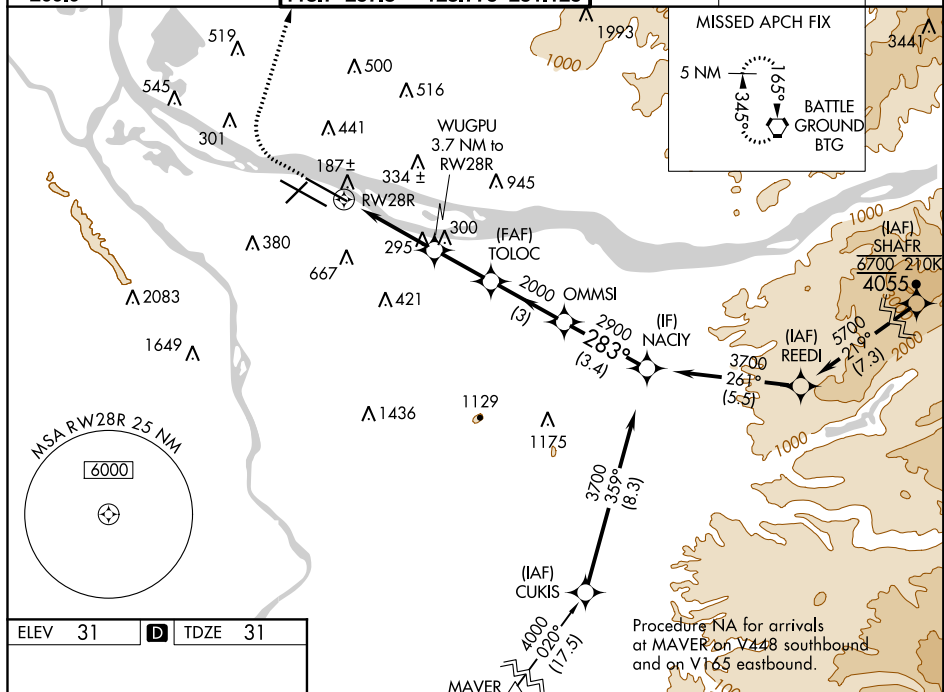
- ⚠** For uncompensated Baro-VNAV systems, LNAV/VNAV NA below -6°C (22°F) or above 54°C (130°F). Simultaneous approach authorized. LNAV procedure NA during RNAV operations. DME/DME RNP-0.3 NA. Use of FD or AP providing RNAV track guidance required during simultaneous operations. For non ALS increase LNAV Cat C/D visibility to RVR 6000.

MALS R



MISSED APPROACH: Climb to 600 then climbing right turn to 4200 direct BTG VORTAC and hold, continue climb-in-hold to 4200.



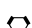
D-ATIS 128.35 269.9	PORTLAND APP CON 124.35 299.2	PORTLAND TOWER Rwy 10L-28R Rwys 3-21, 10R-28L 118.7 257.8 123.775 251.125	GND CON 121.9 348.6	CLNC DEL 120.125 318.1	CPDLC
---	---	--	-------------------------------	----------------------------------	-------



ELEV 31

TDZ 31

REIL Rwys 3 and 21
 TDZ/CL Rwy 10R
 MIRL Rwy 3-21
 HIRL Rwy 10L-28R and 10R-28L

600  * LNAV only		4200 		BTG 		VGSIs and RNAV glidepath not coincident (VGSi Angle 3.00°/TCH 70).					
		WUGPU 3.7 NM to RW28R		TOLOC 2000		OMMSI		NACIY 3700			
		* 1.1 NM to RW28R		1260*		2900		283°		3700	
		RW28R		2000						GP 3.00° TCH 54	
		1.1		2.6 NM		2.3 NM		3 NM		3.4 NM	
CATEGORY		A		B		C		D			
LPV DA				281/24		250 (300-½)					
LNAV/ VNAV DA				446/45		415 (500-¾)					
LNAV MDA		440/24		409 (500-½)		440/40		409 (500-¾)			
C CIRCLING		720-1 689 (700-1)		760-1 729 (800-1)		1060-3		1029 (1100-3)			

RNAV (GPS) X RWY 28R