

WAAS  
CH **81804**  
**W10B**

APP CRS  
**103°**

Rwy Idg **8535**  
TDZE **30**  
Apt Elev **31**

RNAV (GPS) Y RWY 10L

PORTLAND INTL (PDX)

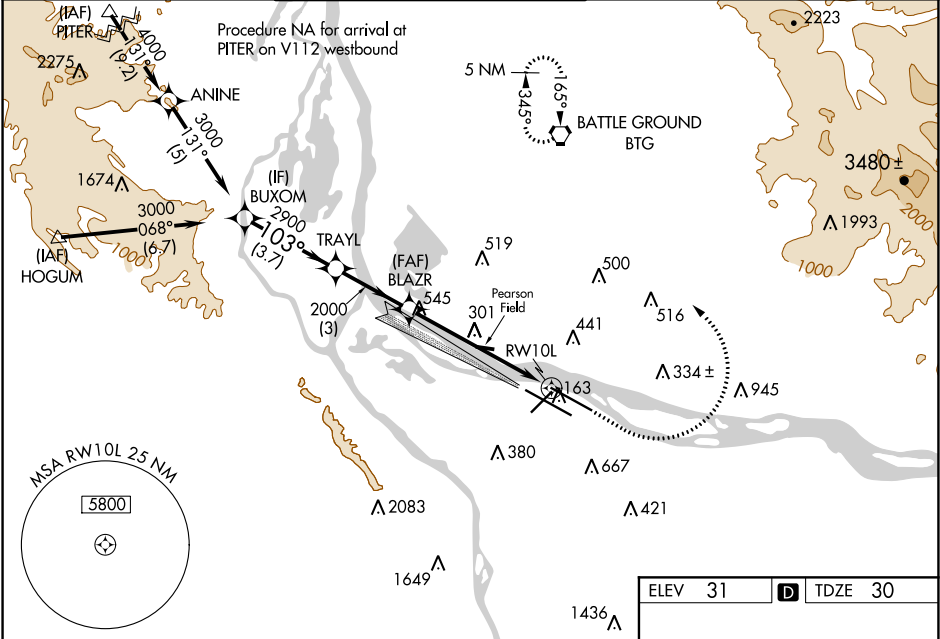
⚠

For uncompensated Baro-VNAV systems, LNAV/VNAV NA below -15°C (5°F) or above 54°C (130°F). DME/DME RNP-0.3 NA. Simultaneous approach authorized with Rwy 10R. Use of FD or AP providing RNAV track guidance required during simultaneous operations. LNAV procedure NA during simultaneous operations. For inoperative MALSR, increase LPV visibility all Cats to RVR 4500. Increase LNAV/VNAV visibility all Cats to 1½ mile, and LNAV Cat C and D visibility to 1¾ mile.

MALSR

MISSED APPROACH: Climb to 800 then climbing left turn to 4200 direct BTG VORTAC and hold, continue climb-in-hold to 4200.

D-ATIS <b>128.35</b> <b>269.9</b>	PORTLAND APP CON <b>124.35 299.2</b>	PORTLAND TOWER Rwy 10L-28R <b>118.7 257.8</b> Rwys 3-21, 10R-28L <b>123.775 251.125</b>	GND CON <b>121.9 348.6</b>	CLNC DEL <b>120.125 318.1</b>	CPDLC
---	---	---	-------------------------------	----------------------------------	-------



BUXOM

TRAYL

BLAZR

RWY 10L

3000

2900

2000

2000

GP 3.00°

TCH 49

3.7 NM

3 NM

4.2 NM

1.8 NM

800

4200

BTG

\*1.8 NM to RWY 10L

\*LNAV only

CATEGORY	A	B	C	D
LPV DA	296/24 266 (300-½)			
LNAV/VNAV DA	413/45 383 (400-¾)			
LNAV MDA	640-1 610 (700-1)	640-1¾ 610 (700-1¾)		
CIRCLING	720-1 689 (700-1)	760-1 729 (800-1)	1060-3 1029 (1100-3)	

103° to RWY 10L

ELEV 31

TDZE 30

REIL Rwys 3 and 21

TDZ/CL Rwy 10R

MIRL Rwy 3-21

HIRL Rwys 10L-28R and 10R-28L