

TACAN RWY 28L

TACAN CBU Chan 29	APCH CRS 275°	Rwy ldg 11,000 TDZE 23 Arprt Elev 31
-----------------------------	-------------------------	---

AL-330 [USAF]

PORTLAND INTL (KPDx)

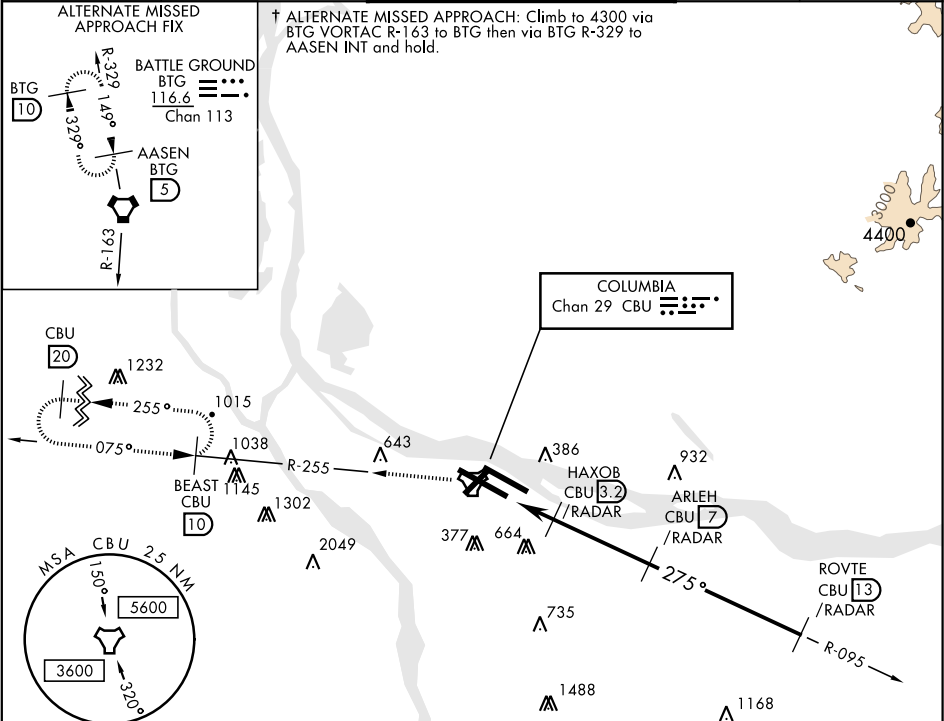
▼ *When ALS inop, increase CAT AB RVR to 50 and vis to 1 mile,
CAT C vis to 1½ miles, CAT D vis to 1¾ miles, CAT E vis to 2 miles

▲ **When VGSI rwy 28R inop, circling rwy 28R NA at night.

MALSR

† MISSED APPROACH: Climbing left turn to 4000
via CBU TACAN R-255 to BEAST INT/ CBU 10
DME and hold or when directed by ATC.

ATIS 128.35 269.9	PORTLAND APP CON 124.35 299.2	PORTLAND TOWER 118.7 257.8 Rwy 10L-28R 123.775 251.125 Rwy 3-21, 10R-28L	GND CON 121.9 348.6	CLNC DEL 120.125 318.1
-----------------------------	---	--	-------------------------------	----------------------------------



RADAR REQUIRED

CATEGORY	A	B	C	D	E
S-28L*	600/24 577 (600-½)		600/50 577 (600-1)	600/60 577 (600-1¼)	600-1½ 577 (600-1½)
CIRCLING**	720-1 689 (700-1)	740-1 709 (800-1)	760-2 729 (800-2)	1000-3 969 (1000-3)	1160-3 1129 (1200-3)

ELEV 31 TDZE 23

424 ±

275° 5.8 NM from FAF

Rwy 10L ldg 8535'
Rwy 28R ldg 9290'
REIL Rwy 3-21
TDZL/CL 10R
MRL Rwy 3-21
HRL Rwy 10L-28R, 10R-28L

TACAN RWY 28L

NW-1, 31 DEC 2020 to 28 JAN 2021

NW-1, 31 DEC 2020 to 28 JAN 2021