

LOC/DME I-RDM	APP CRS	Rwy Idg	7031
109.1	226°	TDZE	3065
Chan 28		Apt Elev	3080

ILS or LOC RWY 23

ROBERTS FIELD (RDM)

NA

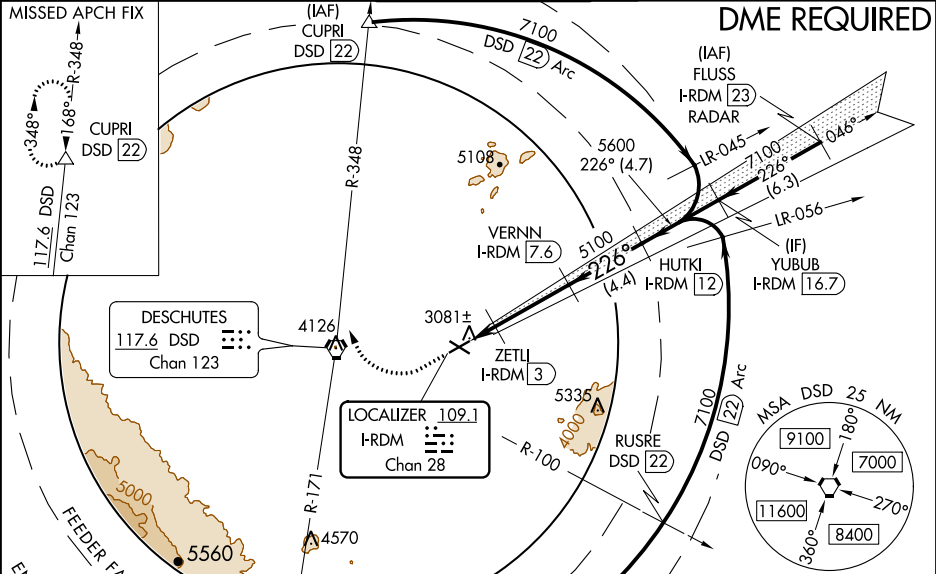
Autopilot coupled approach NA below 4370. DME required. When local altimeter setting not received, use Bend altimeter setting: increase DA to 3341 feet; increase all MDAs 80 feet and all Cat C, D and E visibilities ½ mile. For inop MALSR, increase S-ILS-23 Cat E visibility to ¾ mile and S-LOC-23 Cats C, D and E visibility to 1 mile. When using Bend altimeter setting increase S-ILS-23 all Cats visibility to 1 mile and increase S-LOC-23 Cats C, D and E visibility to 1 ½ mile. VDP NA when using Bend altimeter setting.

MALSR

MISSED APPROACH:

Climb to 3700 then climbing right turn to 7000 on heading 320° and DSD VORTAC R-348 to CUPRI/DSD 22 DME and hold.

ATIS	SEATTLE CENTER	REDMOND TOWER★	GND CON	UNICOM
119.025	126.15 269.475	124.5 (CTAF) 256.8	121.8	122.95



ELEV 3080	D	TDZE 3065
-----------	---	-----------

3700 7000

hdg 320°

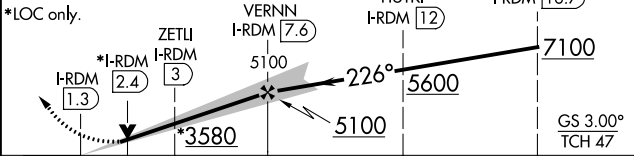
DSD R-348

CUPRI

Use I-RDM DME when on the localizer course.

VGSI and ILS glidepath not coincident (VGSI Angle 3.00/TCH 51).

Procedure Turn NA.



CATEGORY	A	B	C	D	E
S-ILS 23	3440-½	375 (400-½)	3265-½	200 (200-½)	
S-LOC 23	3440-½	375 (400-½)	3440-⅝	375 (400-⅝)	
CIRCLING	3540-1 460 (500-1)	3560-1 480 (500-1)	3640-1½ 560 (600-1½)	3740-2 660 (700-2)	3820-2½ 740 (800-2½)

ELEV 3080

D

TDZE 3065

226° 6.3 NM from FAF

REIL Rwy 5, 11 and 29

HIRL Rwy 5-23

MIRL Rwy 11-29