

AL-345 (FAA)

ROBERTS FIELD (RDM)
REDMOND, OREGON

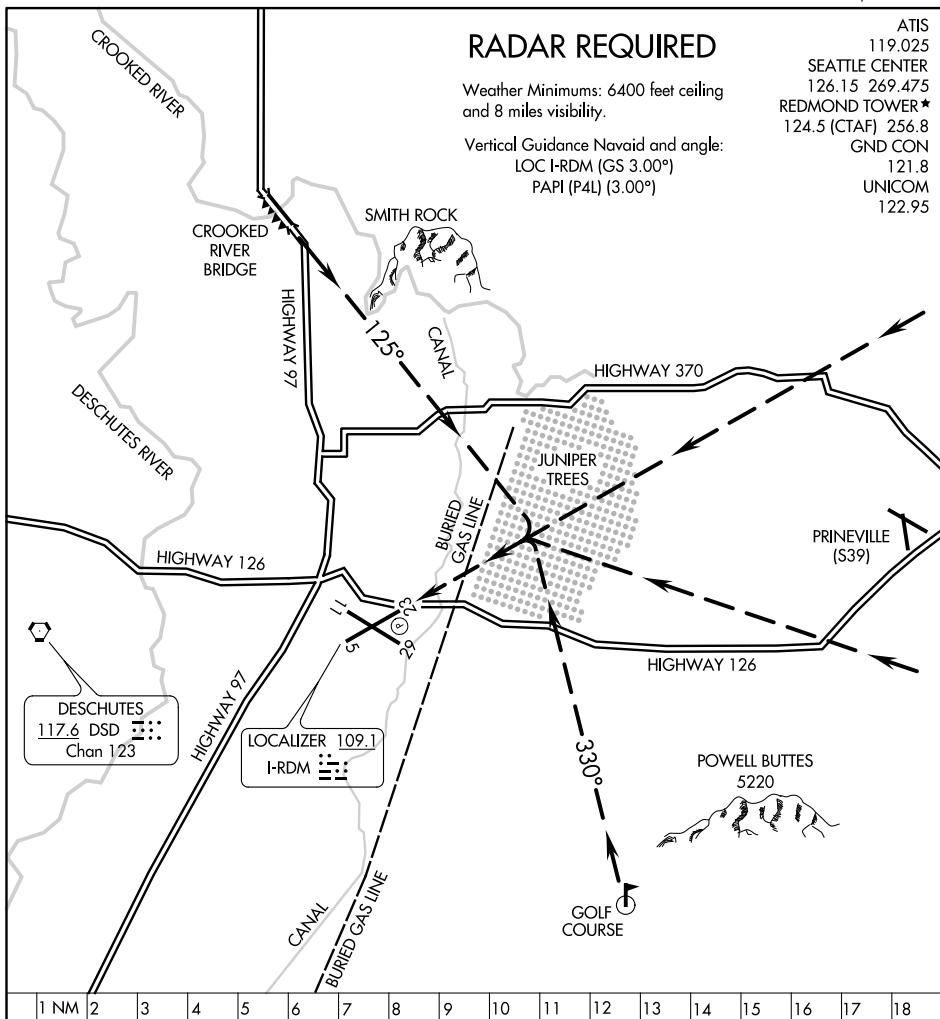
JUNIPER VISUAL RWY 23

RADAR REQUIRED

Weather Minimums: 6400 feet ceiling and 8 miles visibility.

Vertical Guidance Navaid and angle:
LOC I-RDM (GS 3.00°)
PAPI (P4L) (3.00°)

ATIS
 119.025
 SEATTLE CENTER
 126.15 269.475
 REDMOND TOWER★
 124.5 (CTAF) 256.8
 GND CON
 121.8
 UNICOM
 122.95



JUNIPER VISUAL APPROACH RWY 23
PROCEDURE NOT AUTHORIZED AT NIGHT

JUNIPER VISUAL RWY 23

REDMOND, OREGON
ROBERTS FIELD (RDM)

Amdt 2 20AUG15

44°15'N-121°09'W

NW-1, 31 DEC 2020 to 28 JAN 2021