

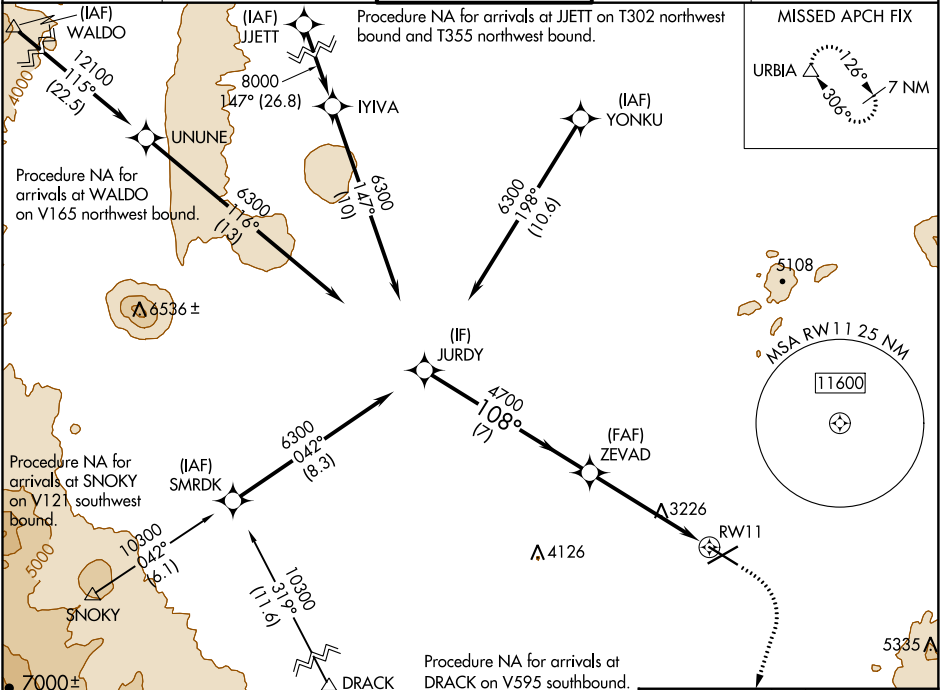
WAAS CH 53514 W11A	APP CRS 108°	Rwy Idg TDZE Apt Elev	7006 3068 3082
--	------------------------	-----------------------------	---

RNAV (GPS) RWY 11

ROBERTS FIELD (RDM)

RNP APCH.	MISSED APPROACH: Climb to 3600 then climbing right turn to 8500 direct URBIA and hold, continue climb-in-hold to 8500.
For uncompensated Baro-VNAV systems, LNAV/VNAV NA below -22°C or above 54°C.	

ATIS 119.025	SEATTLE CENTER 126.15 269.475	REDMOND TOWER ★ 124.5 (CTAF) 256.8	GND CON 121.8	UNICOM 122.95
------------------------	---	--	-------------------------	-------------------------



JURDY		ZEVAD		URBIA	
6300		4700		3600	
108°		4700		8500	
GP 3.00°		1.2 NM to RWY 11		* LNAV only.	
TCH 50		RWY 11		* 1.2 NM to RWY 11	
7 NM		3.8 NM		1.2 NM	
CATEGORY	A	B	C	D	
LPV DA	3268-¾		200 (200-¾)		
LNAV/VNAV DA	3370-⅞		302 (300-⅞)		
LNAV MDA	3480-1	412 (400-1)	3480-1½	412 (400-1½)	
CIRCLING	3540-1 458 (500-1)	3560-1 478 (500-1)	3640-1½ 558 (600-1½)	3740-2 658 (700-2)	

ELEV 3082

TDZE 3068

108° to RWY 11

TWR 3165

7038 X 150

7006 X 100

REIL Rwy 5, 11, and 29

HIRL Rwy 5-23

MIRL Rwy 11-29