
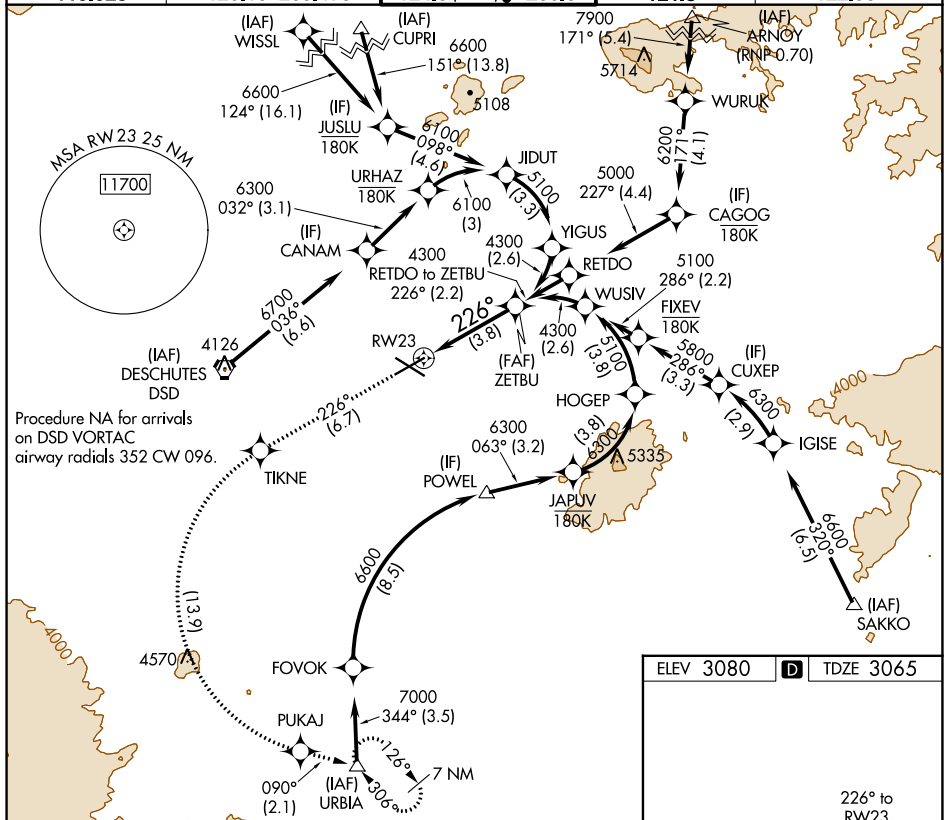




APP CRS 226°	Rwy Idg TDZE Apt Elev	7031 3065 3080
------------------------	-----------------------------	---

RNAV (RNP) Z RWY 23
ROBERTS FIELD (RDM)

<p>T For uncompensated Baro-VNAV systems, procedure NA below -20°C (-4°F) or above 53°C (129°F). For inop MALSR, increase RNP 0.10 all Cats visibility to $\frac{1}{2}$ mile. RFL required. GPS required.</p>	<p>MALSR</p> 	<p>MISSED APPROACH: Climb to 8500 on track 226° to TIKNE left turn to PUKAJ and on track 090° to URBIA and hold, continue climb-in-hold to 8500.</p>
---	---	---

ATIS	SEATTLE CENTER	REDMOND TOWER*	GND CON	UNICOM
119.025	126.15 269.475	124.5 (CTAF) 0 256.8	121.8	122.95



8500 ↑ tr 226°	TIKNE 		PUKAJ tr 090°	URBIA △	ZETBU 4300
----------------------	--	---	------------------	------------	---------------

VGS1 and RNAV glidepath not coincident (VGS1 Angle 3.00/TCH 51).

226°

3.8 NM

See planview for multiple IF locations.

4300

GP 3.00°
TCH 47

CATEGORY	A	B	C	D
RNP 0.10 DA		3315- $\frac{1}{2}$	250 (300- $\frac{1}{2}$)	
RNP 0.30 DA		3552- $1\frac{1}{4}$	487 (500- $1\frac{1}{4}$)	

AUTHORIZATION REQUIRED

