

WAAS CH <b>82514</b> <b>W23A</b>	APP CRS <b>226°</b>	Rwy Idg TDZE Apt Elev <b>7031</b> <b>3067</b> <b>3080</b>
--	------------------------	--

RNAV (GPS) Y RWY 23

ROBERTS FIELD (RDM)

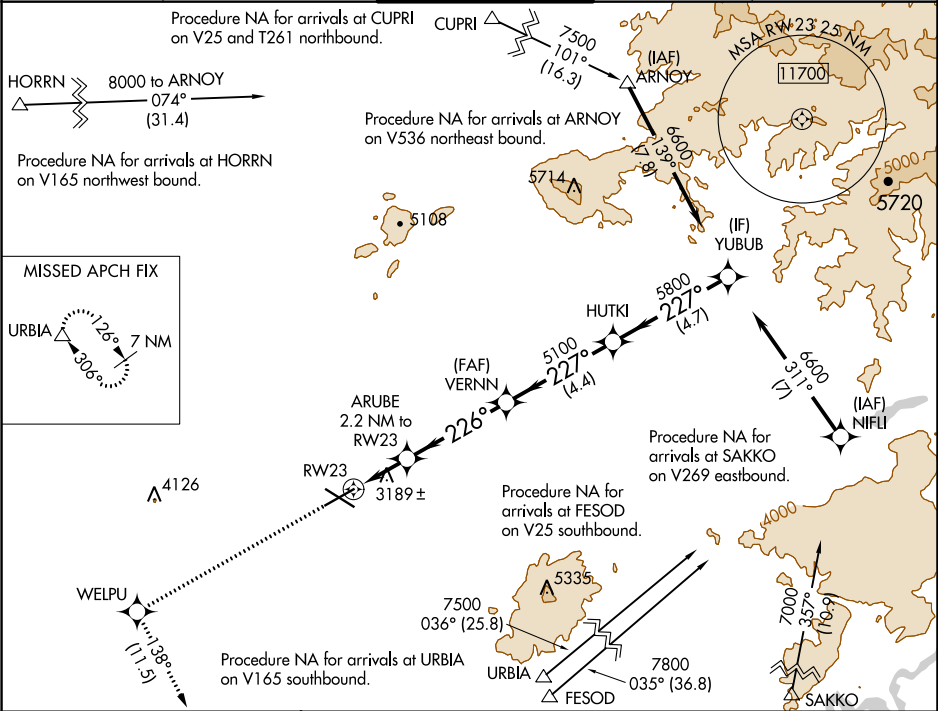
⚠

For uncompensated Baro-VNAV systems, LNAV/VNAV NA below -20°C (-4°F) or above 53°C (128°F).  
DME/DME RNP-0.3 NA. For inop ALS, increase LNAV/VNAV all Cats visibility to ¾ SM and LNAV Cat C/D visibility to 1 SM.

MALSR

MISSED APPROACH: Climb to 8500 direct WELPU and on track 138° to URBIA and hold, continue climb-in-hold to 8500.

ATIS <b>119,025</b>	SEATTLE CENTER <b>126.15 269,475</b>	REDMOND TOWER★ <b>124.5 (CTAF) 0 256.8</b>	GND CON <b>121.8</b>	UNICOM <b>122.95</b>
------------------------	---	---	-------------------------	-------------------------



ELEV 3080

D

TDZE 3067

8500

WELPU

tr 138°

URBIA

VGSI and RNAV glidepath not coincident (VGSI Angle 3.00/TCH 51).

YUBUB

\*LNAV only

ARUBE 2.2 NM to RW23

\*1.1 NM to RW23

RW23

VERNN 5100

HUTKI

226°

227°

5800

6600

GP 3.00° TCH 47

CATEGORY	A	B	C	D
LPV DA	3267-½ 200 (200-½)			
LNAV/VNAV DA	3383-⅝ 316 (400-⅝)			
LNAV MDA	3440-½ 373 (400-½)	3440-¾ 373 (400-¾)		
CIRCLING	3540-1 460 (500-1)	3560-1 480 (500-1)	3640-1½ 560 (600-½)	3760-2¼ 680 (700-2¼)

REIL Rwy 5, 11 and 29

HIRL Rwy 5-23

MIRL Rwy 11-29