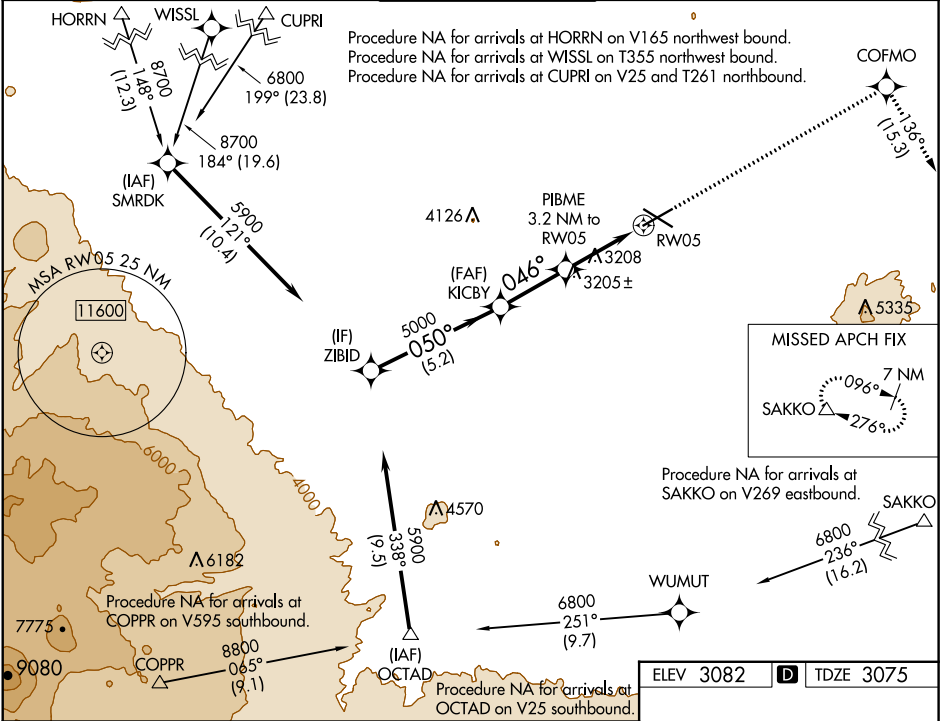



WAAS CH <b>70514</b> <b>W05A</b>	APP CRS <b>046°</b>	Rwy Idg TDZE Apt Elev	<b>7038</b> <b>3075</b> <b>3082</b>
--	------------------------	-----------------------------	---

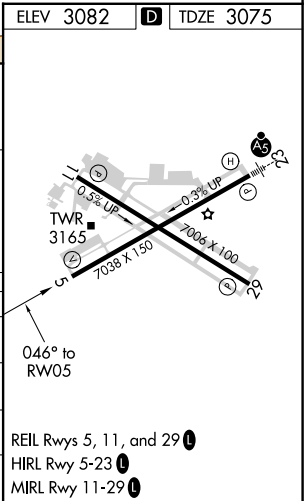
# RNAV (GPS) Y RWY 5

ROBERTS FIELD (RDM)

RNP APCH.		MISSED APPROACH: Climb to 9500 direct COFMO and on track 136° to SAKKO and hold, continue climb-in-hold to 9500.		
For uncompensated Baro-VNAV systems, LNAV/VNAV NA below -22°C or above 54°C.				
ATIS <b>119.025</b>	SEATTLE CENTER <b>126.15 269.475</b>	REDMOND TOWER★ <b>124.5 (CTAF) 0 256.8</b>	GND CON <b>121.8</b>	UNICOM <b>122.95</b>



ZIBID		KICBY		PIBME 3.2 NM to RW05		<div>9500</div> <div>↑</div>		<div>COFMO</div> <div></div>		<div>tr 136°</div>		<div>SAKKO</div> <div>△</div>	
5900		5000		5000		*1.2 NM to RW05		*LNAV only					
GP 3.00° TCH 50		050°		046°		*4140		RW05					
5.2 NM		2.7 NM		2 NM		1.2 NM							
CATEGORY		A		B		C		D					
LPV DA		3275-¾		200 (200-¾)									
LNAV/ VNAV DA		3347-⅞		272 (300-⅞)									
LNAV MDA		3520-1		445 (500-1)		3520-1⅓		445 (500-1⅓)					
CIRCLING		3540-1 458 (500-1)		3560-1 478 (500-1)		3640-1½ 558 (600-1½)		3740-2 658 (700-2)					



NW-1, 31 DEC 2020 to 28 JAN 2021

NW-1, 31 DEC 2020 to 28 JAN 2021