

WAAS CH <b>49216</b> <b>W27A</b>	APP CRS <b>270°</b>	Rwy Idg TDZE <b>6765</b> Apt Elev <b>6765</b>
--	------------------------	---

RNAV (GPS) RWY 27

SOUTHWEST WYOMING RGNL (R.KS)

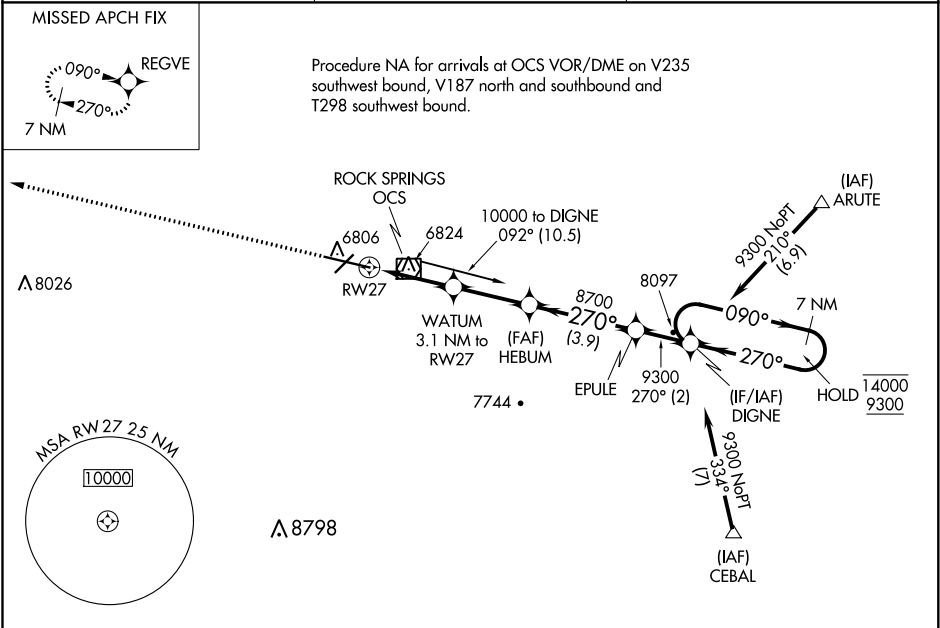
RNP APCH.

▼ For uncompensated Baro-VNAV systems, LNAV/VNAV NA below -27°C or above 44°C. For inop ALS increase LNAV/VNAV all Cats visibility to ¾ SM.

MALSR

MISSED APPROACH: Climb to 9800 direct REGVE and hold.

ASOS <b>118.375</b>	SALT LAKE CENTER <b>124.35 353.5</b>	UNICOM <b>122.8 (CTAF) 0</b>
------------------------	---	---------------------------------



ELEV 6765	D	TDZE 6765
-----------	---	-----------

270° to RW27

9800	REGVE
↑	✧

\*LNAV only.

WATUM 3.1 NM to RW27

HEBUM 8700

EPULE 9300

DIGNE 9300

7 NM Holding Pattern

090° → 14000  
← 270° 9300

GP 3.00°  
TCH 55

	0.9 NM	2.2 NM	2.8 NM	3.9 NM	2 NM	
CATEGORY	A	B	C	D		
LPV DA	6965-½ 200 (200-½)					
LNAV/VNAV DA	7036-½ 271 (300-½)					
LNAV MDA	7100-½ 335 (400-½)					
CIRCLING	7140-1 375 (400-1)	7220-1 455 (500-1)	7220-1½ 455 (500-1½)	7540-2 ½ 775 (800-2 ½)		