

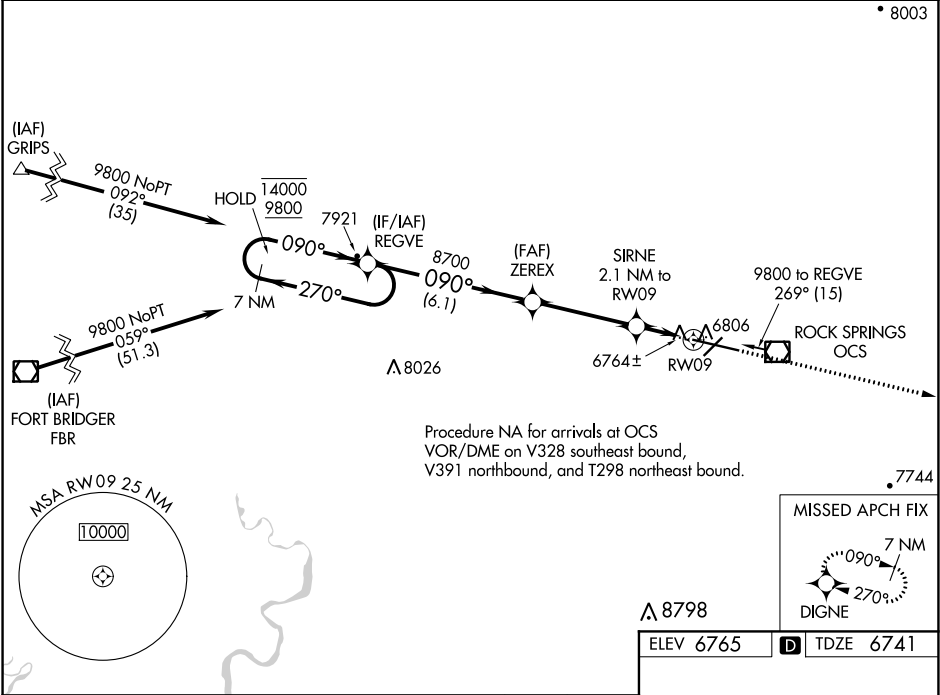
WAAS CH 66016 W09A	APP CRS 090°	Rwy Idg 10000 TDZE 6741 Apt Elev 6765
--	------------------------	--

RNAV (GPS) RWY 9

SOUTHWEST WYOMING RGNL (RKS)

RNP APCH.	ODALS	MISSED APPROACH: Climb to 9600 direct DIGNE and hold.
▼ For uncompensated Baro-VNAV systems, LNAV/VNAV NA below -28°C or above 45°C .		

ASOS 118.375	SALT LAKE CENTER 124.35 353.5	UNICOM 122.8 (CTAF) 0
------------------------	---	---------------------------------



7 NM Holding Pattern		REGVE	ZEREX	SIRNE	9600 DIGNE
14000 9800		270° 090°	8700	2.1 NM to RW09	*LNAV only.
GP 3.00° TCH 50		090°	*7440	*0.8 NM to RW09	
		6.1 NM	3.8 NM	1.3 NM	0.8
CATEGORY	A	B	C	D	
LPV DA	6941-¾ 200 (200-¾)				
LNAV/VNAV DA	7034-¾ 293 (300-¾)				
LNAV MDA	7040-¾ 299 (300-¾)				7040-1 299 (300-1)
CIRCLING	7140-1 375 (400-1)	7220-1 455 (500-1)	7220-1½ 455 (500-1½)	7540-2½ 775 (800-2½)	

