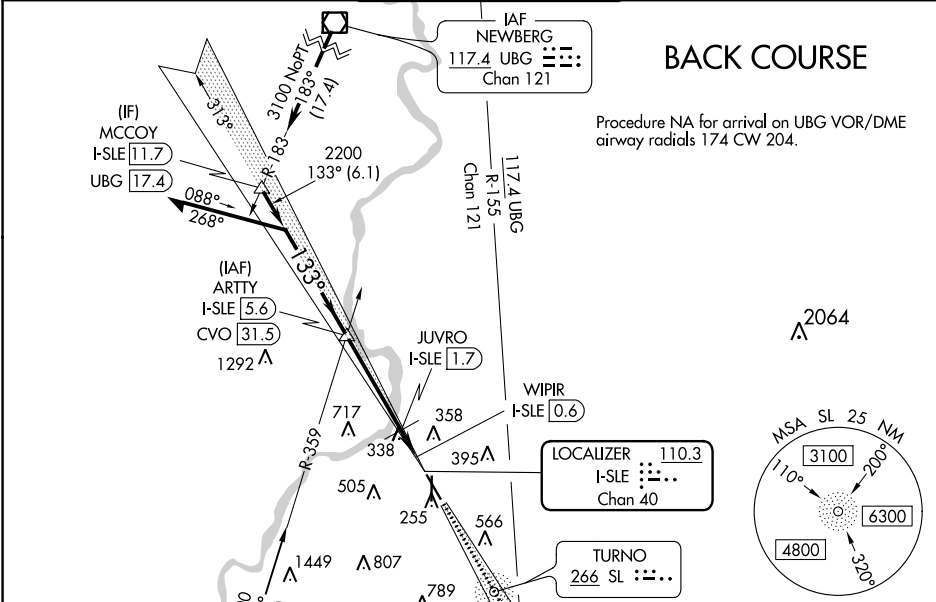


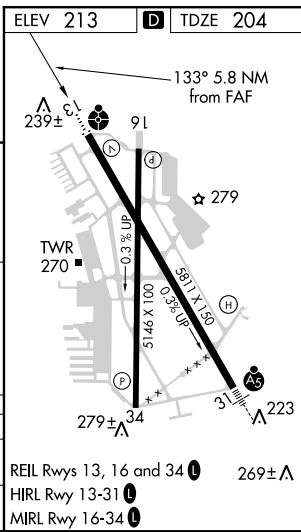
LOC/DME I-SLE	APP CRS	Rwy Idg	5811
110.3	133°	TDZE	204
Chan 40		Apt Elev	213

LOC BC RWY 13  
MCMARY FIELD (SLE')

DME required.		ODALS		MISSED APPROACH: Climb to 2400 on I-SLE Localizer SE course (133°) to LOTKE INT/ I-SLE 6.9 DME and hold.	
When local altimeter setting not received, use Mc Minnville altimeter setting and increase all MDAs 60 feet and visibility S-LOC 13 Cat C/D 1/2 SM and Circling Cat C 1/2 SM. For inop ALS when using Mc Minnville altimeter setting, increase S-LOC 13 Cats C and D visibility to 1 1/2 SM. Rwy 13 helicopter visibility reduction below 3/4 SM NA.					
ATIS	SEATTLE CENTER	SALEM TOWER ★		GND CON	UNICOM
124.55	125.8 291.7	119.1(CTAF) 0 257.2		121.9	122.95



CORVALLIS 115.4 CVO Chan 101 (RADAR REQD)		LOCALIZER 110.3 I-SLE Chan 40		TURN0 266 SL	
Remain within 10 NM		ARTTY INT I-SLE 5.6		LOTKE INT	
Disregard glide slope indications.		JUVRO I-SLE 1.7		WIPIR I-SLE 0.6	
3.9 NM		1.1 NM		0.8	
CATEGORY	A	B	C	D	
S-LOC 13	600-3/4	396 (400-3/4)	600-1	396 (400-1)	
CIRCLING	900-1 687 (700-1)	960-1 747 (800-1)	1060-2 1/2 847 (900-2 1/2)	1260-3 1047 (1100-3)	



NW-1, 31 DEC 2020 to 28 JAN 2021

NW-1, 31 DEC 2020 to 28 JAN 2021