

WAAS CH 86202 W31A	APP CRS 313°	Rwy Idg TDZE Apt Elev	5811 214 214
--	------------------------	-----------------------------	---

RNAV (GPS) RWY 31

MCNARY FIELD (SLE')

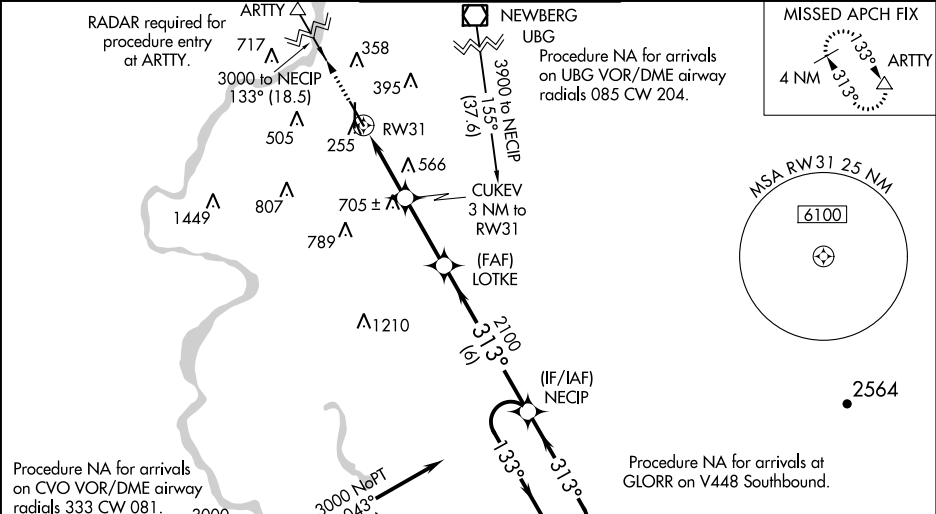
RNP APCH.

For uncompensated Baro-VNAV systems, LNAV/VNAV NA below -15°C or above 54°C
When local altimeter setting not received, use Mc Minnville altimeter setting and increase all DA 49 feet; increase all MDAs 60 feet; increase LNAV/VNAV visibility all Cats to 1 ½ SM, LNAV Cat C and D visibility to 2 SM, and Circling Cat A visibility to 1¼ SM and Cat C visibility to 2¾ SM. Baro-VNAV and VDP NA when using Mc Minnville altimeter setting. For inop ALS, increase LNAV/VNAV all Cats visibility to 1 ½ SM and increase LNAV Cat C and D visibility to 2½ SM. For inop ALS when using Mc Minnville altimeter setting, increase LPV all Cats visibility to 4500, increase LNAV/VNAV all Cats visibility to 2 SM, increase LNAV Cats C and D visibility to 2½ SM. ** RVR 1800 authorized with use of FD or AP or HUD to DA, NA when using Mc Minnville altimeter setting.

MALSR

MISSED APPROACH:
Climb to 3700 direct ARTTY and hold, continue climb-in-hold to 3700.

ATIS 124.55	SEATTLE CENTER 125.8 291.7	SALEM TOWER ★ 119.1 (CTAF) 0 257.2	GND CON 121.9	UNICOM 122.95
-----------------------	--------------------------------------	--	-------------------------	-------------------------



3700	ARTTY	CUKEV 3 NM to RW31	LOTKE	NECIP	4 NM Holding Pattern
*LNAV only	*2.2 NM to RW31	*1200	2100	133° → 3000	← 313°
2.2 NM		0.8	2.8 NM	6 NM	GP 3.00° TCH 42
CATEGORY	A	B	C	D	
LPV DA **	414/24		200 (200-½)		
LNAV/VNAV DA	891-1½		677 (700-1½)		
LNAV MDA	1020/50	806 (900-1)	1020-1⅞	806 (900-1⅞)	
CIRCLING	1020-1 806 (900-1)	1020-1¼ 806 (900-1¼)	1060-2½ 846 (900-2½)	1260-3 1046 (1100-3)	

