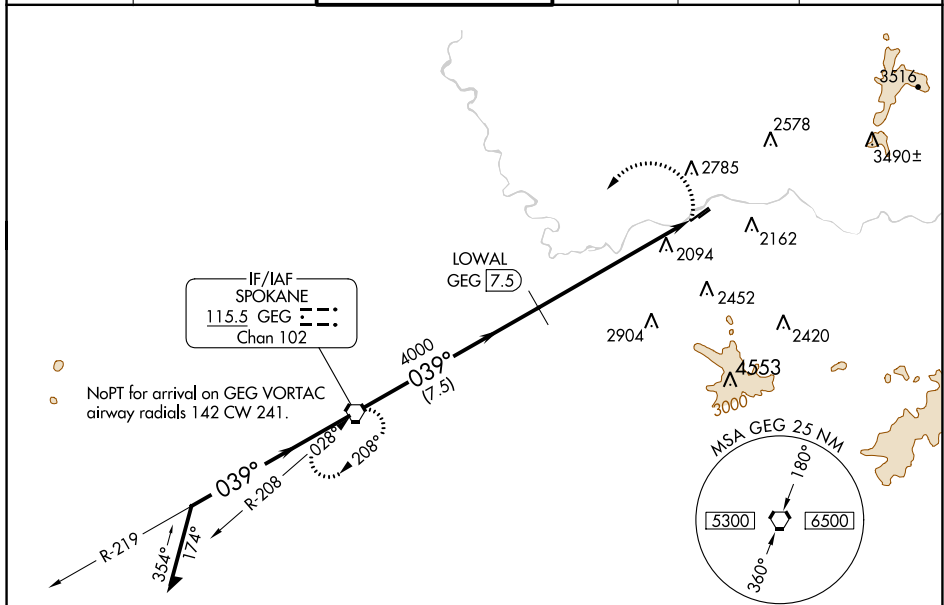


20198

VOR RWY 4L
FELTS FIELD (SFF)

MISSED APPROACH: Climbing left turn to 4500 direct GEG VORTAC and hold.

ATIS 120.55	SPOKANE APP CON 133.35 263.0	FELTS TOWER ★ 132.5 (CTAF) 0 239.025	GND CON 121.7	CLNC DEL 121.7	UNICOM 122.95
-----------------------	--	--	-------------------------	--------------------------	-------------------------



NW-1, 31 DEC 2020 to 28 JAN 2021

NW-1, 31 DEC 2020 to 28 JAN 2021

ELEV 1957 TDZE 1949

039° 6.3 NM from FAF

4459 X 140

2650 X 75

TWR 2037

WATER RWYS:
03W-21W 6000 X 100

REIL Rwy 4L

MIRL Rwy 4L-22R

FELTS FIELD (SFF)
VOR RWY 4L

47°41'N-117°19'W