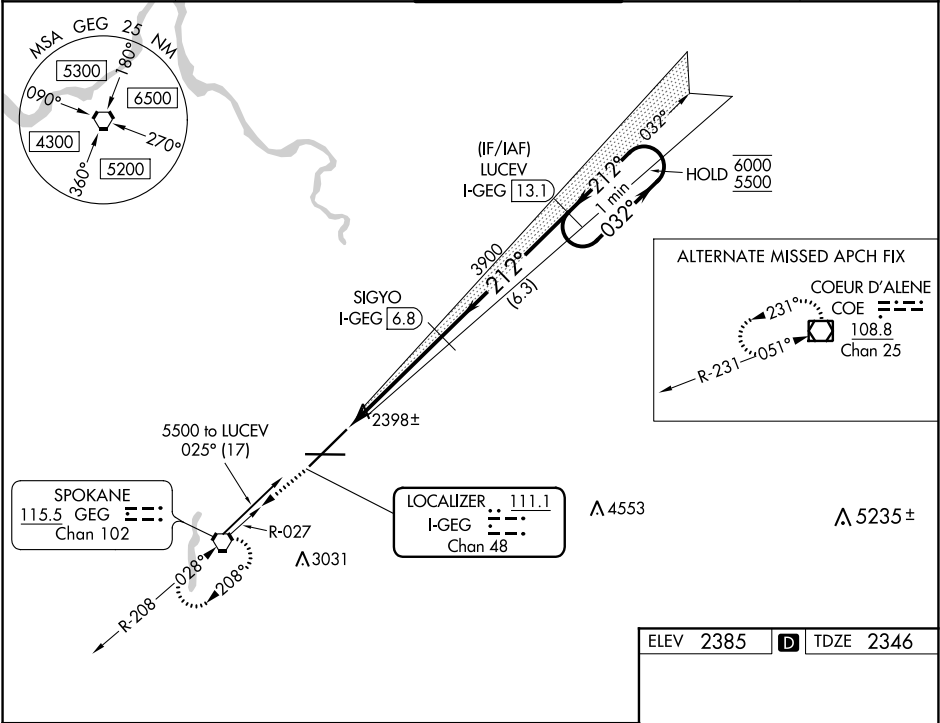


LOC/DME I-GEG	APP CRS	Rwy Idg	11002
111.1	212°	TDZE	2346
Chan 48		Apt Elev	2385

ILS RWY 21 (CAT II & III)
SPOKANE INTL (GEG)

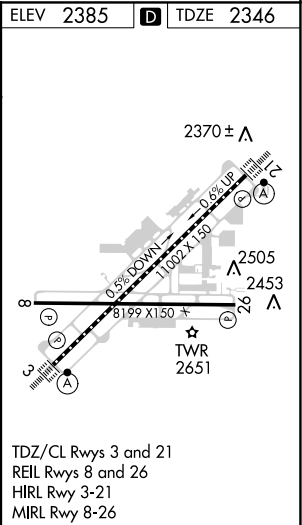
DME required.	ALSIF-2	MISSED APPROACH: Climb to 4200 on GEG VORTAC R-027 to GEG VORTAC and hold.
CAT II: RVR 1000 authorized with specific OPSPEC, MSPEC, or LOA approval and use of autoland or HUD to touchdown.		

ATIS	SPOKANE APP CON	SPOKANE TOWER	GND CON	CLNC DEL
124.325 254.375	123.75 282.25 (205°-025°) 133.35 263.0 (026°-204°)	118.3 278.3	121.9 348.6	127.55



4200	GEG	VGSI and ILS glidepath not coincident (VGSI Angle 3.00/TCH 73).	LUCEV I-GEG 13.1	One Minute Holding Pattern
GEG R-027				
		SIGYO I-GEG 6.8		
		3900		
		212°		
		032°		
		6000		
		5500		
		GS 3.00°		
		TCH 55		
		912'		
		4.8 NM		
		6.3 NM		
CATEGORY	A	B	C	D
S-ILS 21	CAT II RA 147/12 76 DA 2422			
S-ILS 21	CAT III RVR 03			

CATEGORY II & III ILS - SPECIAL AIRCREW
& AIRCRAFT CERTIFICATION REQUIRED



NW-1, 31 DEC 2020 to 28 JAN 2021

NW-1, 31 DEC 2020 to 28 JAN 2021