

LOC/DME I-OLJ 111.1 Chan 48	APP CRS 031°	Rwy Idg TDZE 2385 Apt Elev 2385
---	------------------------	---

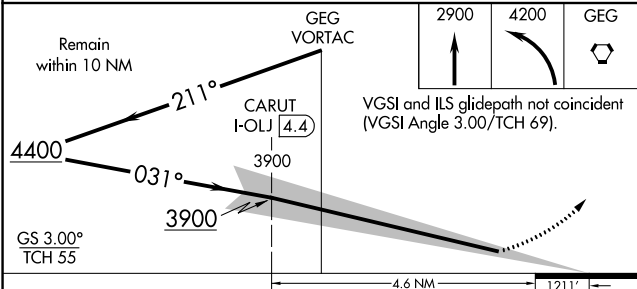
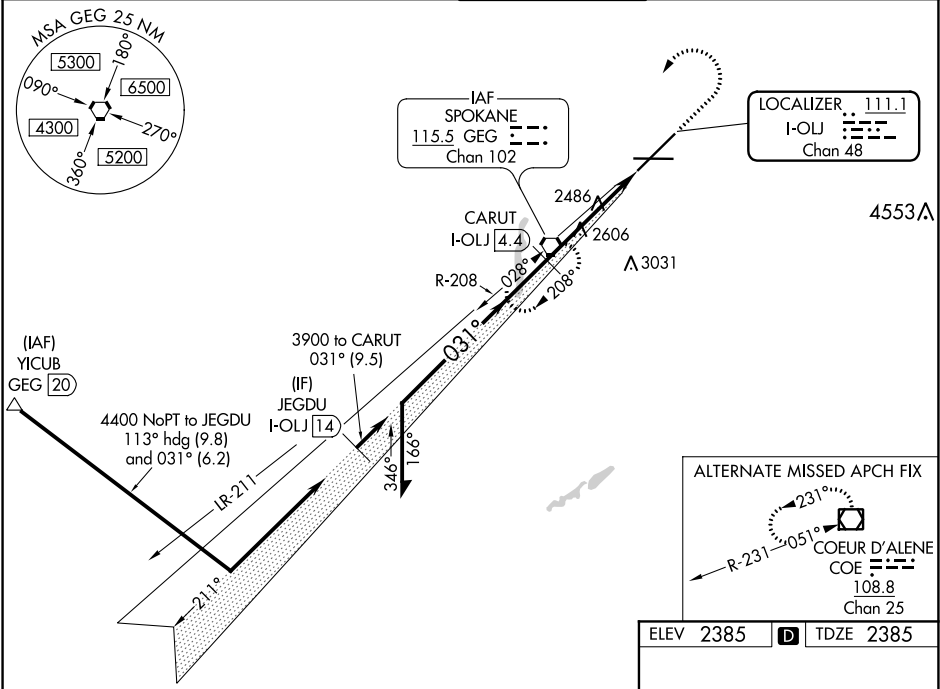
ILS RWY 3 (CAT II & III)
SPOKANE INTL (GEG)

⚠ CAT II: RVR 1000 authorized with specific OPSPEC, MSPEC, or LOA approval and use of autoland or HUD to touchdown.

ALS F-2

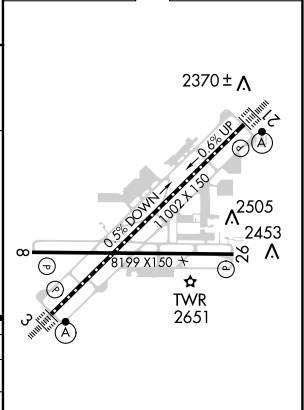
MISSED APPROACH: Climb to 2900 then climbing left turn to 4200 direct GEG VORTAC and hold.

ATIS 124.325 254.375	SPOKANE APP CON 123.75 282.25 (205°-025°) 133.35 263.0 (026°-204°)	SPOKANE TOWER 118.3 278.3	GND CON 121.9 348.6	CLNC DEL 127.55
--------------------------------	--	-------------------------------------	-------------------------------	---------------------------



CATEGORY	A	B	C	D
S-ILS 3	CAT II	RA 104/12	100	DA 2485
S-ILS 3	CAT III	RVR 03		

ELEV 2385	D	TDZE 2385
-----------	---	-----------



CATEGORY II & III ILS - SPECIAL AIRCREW & AIRCRAFT CERTIFICATION REQUIRED

TDZ/CL Rwy 3 and 21
REIL Rwy 8 and 26
HIRL Rwy 3-21
MIRL Rwy 8-26

NW-1, 31 DEC 2020 to 28 JAN 2021

NW-1, 31 DEC 2020 to 28 JAN 2021