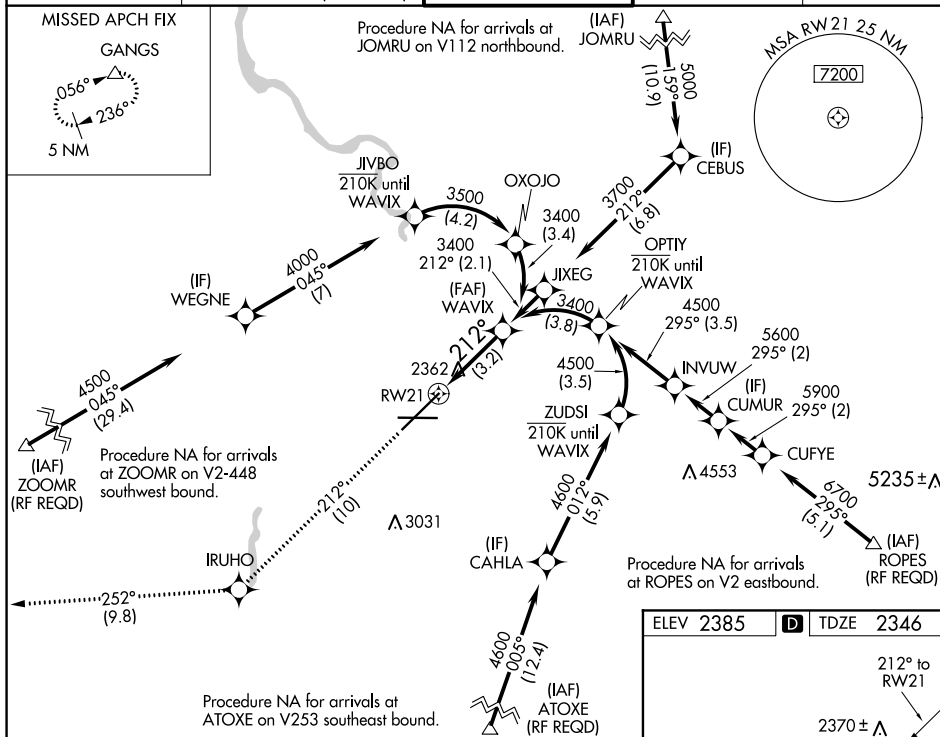


APP CRS 212°	Rwy Idg 11002 TDZE 2346 Apt Elev 2385
------------------------	--

RNAV (RNP) Z RWY 21
SPOKANE INTL (GEG)

RNP AR APCH.				ALS-F-2		MISSED APPROACH: Climb to 5000 on track 212° to IRUHO and on track 252° to GANGS and hold.	
<div>▼</div> For uncompensated Baro-VNAV systems, procedure NA below -19°C or above 43°C. For inop ALS increase RNP 0.11 visibility all Cats to ¾, RNP 0.15 visibility all Cats to 1% and RNP 0.30 visibility all Cats to 1% .				<div><div>A</div><div><div></div><div></div><div></div></div></div>		*Missed approach requires minimum climb of 310 feet per NM to 3000.	
ATIS		SPOKANE APP CON		SPOKANE TOWER		GND CON	CLNC DEL
124.325 254.375		123.75 282.25 (205°-025°) 133.35 263.0 (026°-204°)		118.3 278.3		121.9 348.6	127.55



5000
↑
tr 212°

IRUHO

fr 252°

GANGS
△

VGSI and RNAV glidepath not coincident
(VGSI Angle 3.00°/TCH 73).

WAVIX
3400

3400

GP 3.00°
TCH 55

3.2 NM

212°

RW21

See planview for multiple IF locations.

CATEGORY	A	B	C	D
RNP 0.11 DA*		2596/24	250 (300-½)	
RNP 0.15 DA		2699/30	353 (400-¾)	
RNP 0.30 DA		2752/45	406 (400-¾)	

Diagram illustrating the layout of Runway 3 (08L) and Runway 26 (08R) at the intersection. The diagram shows the intersection of Runway 3 (08L) and Runway 26 (08R). Runway 3 is 8199 x 150 feet, and Runway 26 is 11002 x 150 feet. The intersection is marked with a star and labeled 'TWR 2651'. Runway 3 has a 0.5% DOWN slope, and Runway 26 has a 0.5% UP slope. The diagram also shows the intersection of Runway 3 and Runway 21 (121° to RW21). The elevation at the intersection is 2370 ± feet. The diagram includes various navigation aids and markers, including a 'D' marker, a 'TDZE 2346' marker, and a '2370 ± Δ' marker.

AUTHORIZATION REQUIRED