

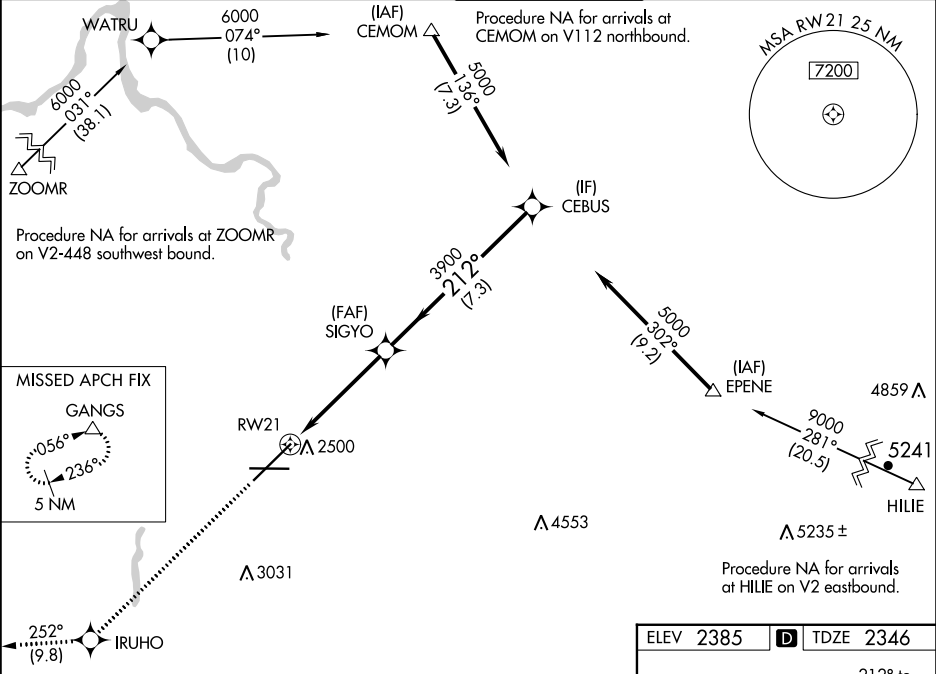
WAAS CH 82619 W21A	APP CRS 212°	Rwy Idg TDZE 2346 Apt Elev 2385
--	------------------------	---

RNAV (GPS) Y RWY 21

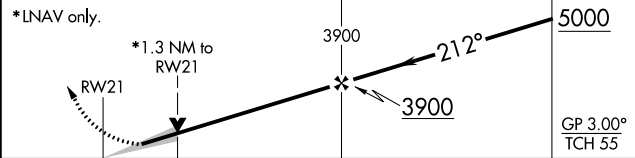
SPOKANE INTL (GEG)

RNP APCH. ▼ For uncompensated Baro-VNAV systems, LNAV/VNAV NA below -18°C or above 53°C. ▲	ALSF-2 A	MISSED APPROACH: Climb to 5000 direct IRUHO and on track 252° to GANGS and hold.
--	-------------	--

ATIS 124.325 254.375	SPOKANE APP CON 123.75 282.25 (205°-025°) 133.35 263.0 (026°-204°)	SPOKANE TOWER 118.3 278.3	GND CON 121.9 348.6	CLNC DEL 127.55
--------------------------------	--	-------------------------------------	-------------------------------	---------------------------



5000	IRUHO	tr 252°	GANGS	VGSI and RNAV glidepath not coincident (VGSI Angle 3.00/TCH 73).
------	-------	---------	-------	--



CATEGORY	A	B	C	D
LPV DA	2546/18	200 (200-½)		
LNAV/VNAV DA	2720/45	374 (400-¾)		
LNAV MDA	2800/24	454 (500-½)	2800/45	454 (500-¾)
CIRCLING	2960-1 575 (600-1)	2980-1 595 (600-1)	3300-2¾ 915 (1000-2¾)	3400-3 1015 (1100-3)

